

Lake Central High School

WELCOME!

LAKE CENTRAL HIGH SCHOOL FRESHMEN
PARENT INFORMATION NIGHT



January 23, 2017

Lake Central High School

INCOMING FRESHMEN PARENT INFORMATION NIGHT

Parent Meeting

Freshmen Year Overview

Information Booths

Questions, Resources, Summer School Information

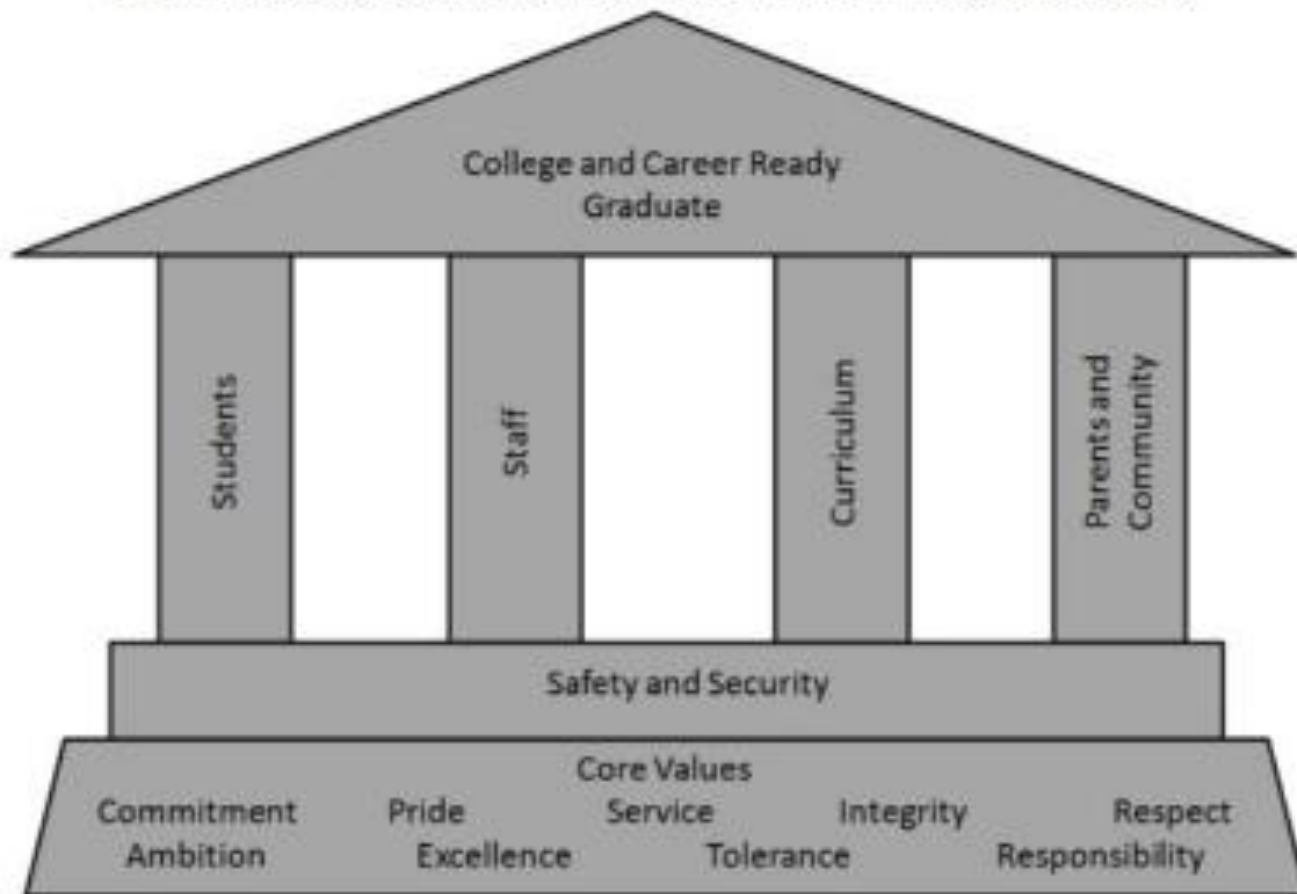
Tour of Facilities

Freshmen Wing, High School, Gym, Pool, Field House

Lake Central High School

Why we are here . . .

Lake Central High School Vision: Teach, Mentor and Develop all students so they are ready and able to succeed in any college and any career – empowered to positively contribute to our community and society.



Lake Central High School

Road to Freshman Year . . .

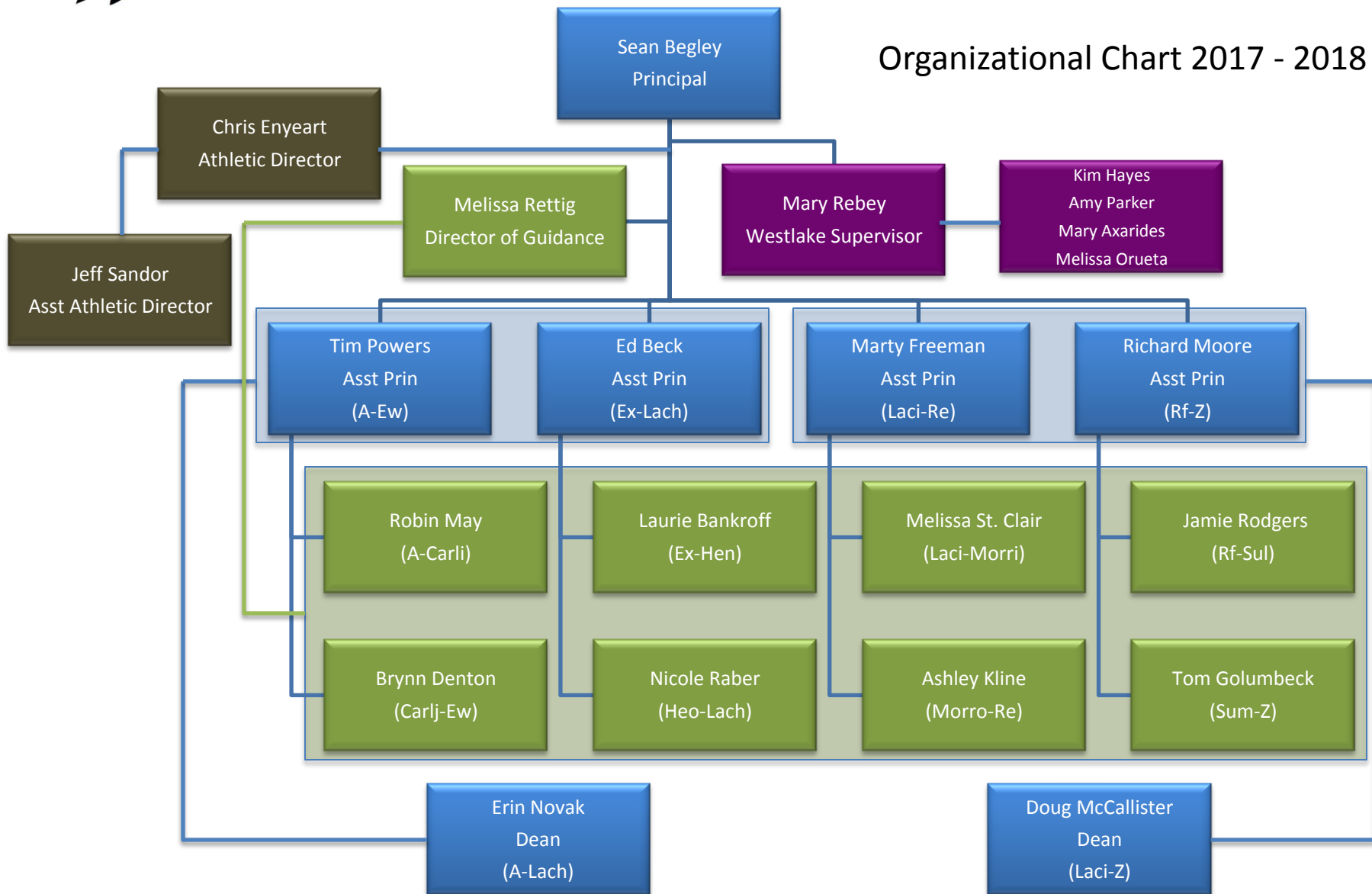
Important Dates

- | | |
|---------------------------|---|
| • Jan/Feb 2017 | Pre-Scheduling Sessions at Middle Schools |
| • January 23, 2017 | Parent Information Night (PIN) |
| • Jan 23 – Feb 2, 2017 | Summer School Lottery Sign-ups – PE/Pool |
| • February 2, 2017 | Summer School Lottery Drawing |
| • February 7, 2017 | Family Notification on Summer Sch Status |
| • February 13 – 28, 2017 | Fall Course Requests |
| • April 10, 2017 | Athletic Orientation (6:00 PM) – Main Gym |
| • June 5 – 22, 2017 | Summer School – Session 1 |
| • June 23 – July 14, 2017 | Summer School – Session 2 |
| • August 8, 2017 | Freshmen Rush |
| • August 14, 2017 | First Day of School |



Lake Central High School

Organizational Chart 2017 - 2018



Lake Central High School

Freshman Year – A Year of Change

- Our students enter as adolescents and leave as adults
 - Freshmen year you become a young adult
- New People - Teachers, 3 Middle Schools + Private & Parochial Schools Consolidate, Counselors, Principals, and Academic Team
- New Facilities – 880,000 square foot campus
- Schedule – Modified - Block schedule
- Programs – Clubs, Athletics, Dances, Arts – During much of the year, there are students in the building for 17 hours out of a 24 hour day

Lake Central High School

Freshman Year – Challenges

- Earning High School Credits
- Transcript - The grades a student earns freshmen year are used by colleges in order to determine admission
- Adjusting to High School – Time management, stringent academic policies, expectations and personal responsibility
- Participating in School Activities

Lake Central High School

Finding the balance while
finding your way



Lake Central High School

Online Scheduling

- Detailed Skyward course request instructions are available on the school website at the following link:
- <http://lake-central.lcsc.us/wp-content/uploads/sites/3/2016/09/SkywardScheduling1718.pdf>

Lake Central High School

Freshman Year – Academic Success (Resources)

- Do Not Procrastinate on Homework
- Before School Tutoring
- Tutoring during the Academic Assistance Period – Tuesday and Fridays
- Peer Tutors during Study Hall
- After School Assistance – Mondays and Wednesdays – 2:15 – 2:50

Lake Central High School

Freshman Year – Academic Success (Classes)

- Algebra With Lab (Double Block)
- English With Lab (Double Block)
- Biology Support
- Resource for Algebra and English
- Academic Assistance during PtE

Lake Central High School

Guidance Department

- Earning Credits Toward Graduation
 - Core 40 Diploma (46 Credits) – Default Diploma
 - Core 40 Diploma with Academic Honors (47 Credits)
 - Core 40 Diploma with Technical Honors (47 Credits)

Lake Central High School

Freshman Courses

1. English – English 9, English 9 Honors
2. Mathematics – Algebra 9, Geometry Honors, Geometry
3. Science – Biology, Biology Honors
4. Physical Education – 1 semester of Gym, 1 semester of Pool
5. Social Studies – AP Human Geography, World History
6. Preparing for College and Careers – Taught during PtE
7. Elective 1 – Student and family choice based on availability
8. Elective 2 – Student and family choice based on availability

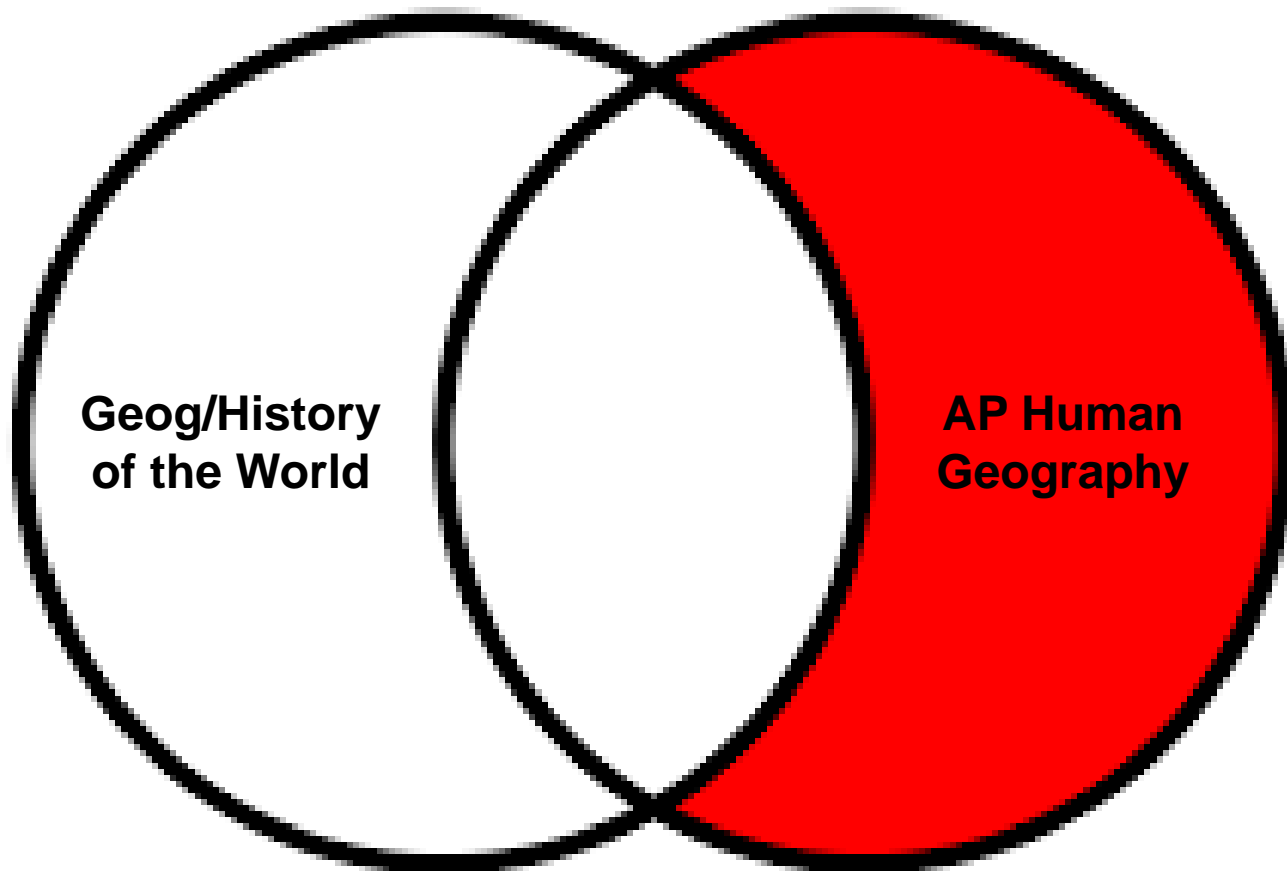
Elective courses Freshmen are listed in our Course Selection Guide. Some are year-long courses, some are semester-long courses.

<http://lake-central.lcsc.us/wp-content/uploads/sites/3/2016/09/CourseSelectionGuide1718.pdf>

Don't forget! If your student plans to take English 9 Honors, they need to read all books on the Lake Central High School 2017 Summer Reading list!

Lake Central High School

Geography/History of the World and AP Human Geography



Both subjects are taught over the school year. Since the two classes have a great deal of overlap, students can earn credit for both classes, meet their social studies requirement, and take AP.

Lake Central High School

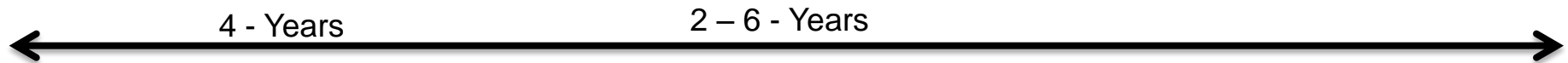
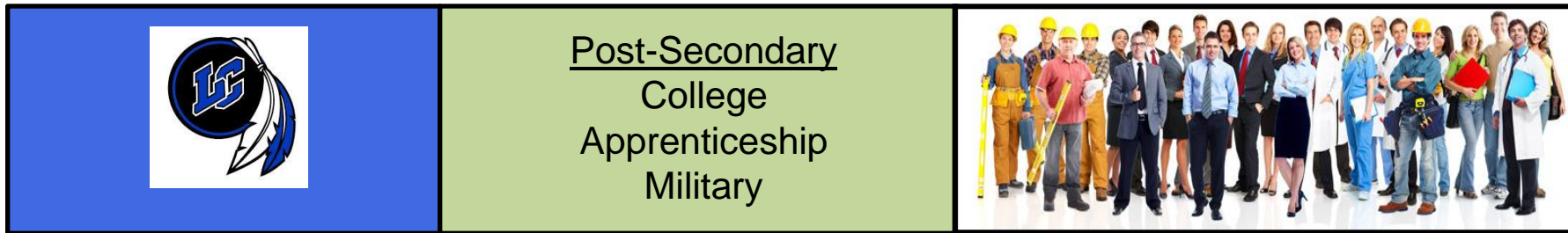
Bell Schedule - 5 Day Week

Monday/Thursday (Blue Day)	Tuesday/Friday (White Day)	Wednesday (Traditional Day)	Monday/Thursday (Blue Day)	Tuesday/Friday (White Day)
1st Period 7:15 - 8:45 (90)	5th Period 7:15 - 8:45 (90)	1st Period 7:15 - 8:04 (49)	1st Period 7:15 - 8:45 (90)	5th Period 7:15 - 8:45 (90)
		2nd Period 8:10 - 8:59 (49)		
2nd Period 8:51 - 10:21 (90)	Pathways to Excellence (PtE) 8:51 - 10:21 (90) 8:51 - 9:21 PCC or Class Seminar 9:21 - 10:21 Academic Assistance	5th Period 9:05 - 9:54 (49)	2nd Period 8:51 - 10:21 (90)	Pathways to Excellence (PtE) 8:51 - 10:21 (90) 8:51 - 9:21 PCC or Class Seminar 9:21 - 10:21 Academic Assistance
		6th Period 10:00 - 10:49 (49) A Lunch = 10:00 - 10:30 A Class = 10:30 - 11:19 (49) B Class = 10:00 - 10:49 (49) B Lunch = 10:49 - 11:19		
3rd Period 10:21 - 12:27 (126) A Lunch = 10:21 - 10:51 B Lunch = 10:53 - 11:23 C Lunch = 11:25 - 11:55 D Lunch = 11:57 - 12:27	6th Period 10:21 - 12:27 (126) A Lunch = 10:21 - 10:51 B Lunch = 10:53 - 11:23 C Lunch = 11:25 - 11:55 D Lunch = 11:57 - 12:27	3rd Period 11:25 - 12:19 (54) C Class (1) = 10:55 - 11:19 (24) C Lunch = 11:19 - 11:49 C Class (2) = 11:49 - 12:19 (30) D Class = 10:55 - 11:49 (54) D Lunch = 11:49 - 12:19	3rd Period 10:21 - 12:27 (126) A Lunch = 10:21 - 10:51 B Lunch = 10:53 - 11:23 C Lunch = 11:25 - 11:55 D Lunch = 11:57 - 12:27	6th Period 10:21 - 12:27 (126) A Lunch = 10:21 - 10:51 B Lunch = 10:53 - 11:23 C Lunch = 11:25 - 11:55 D Lunch = 11:57 - 12:27
4th Period 12:33 - 2:09 (96) Announcements	7th Period 12:33 - 2:09 (96) Announcements	4th Period 12:25 - 1:14 (49)	4th Period 12:33 - 2:09 (96) Announcements	7th Period 12:33 - 2:09 (96) Announcements
		7th Period 1:20 - 2:09 (49)		

Lake Central High School

Your Child's Pathway to Excellence

Goal: Provide all our students a sequential and methodical method of determining their individual future career goal, understand this chosen career, find a post-secondary institution that will lead to this career, understand the requirements necessary to gain admission to this post-secondary institution, and create a course of study (4-Year Plan) at LC that prepares all students and gains admission to their chosen post-secondary institution.



Pathways to Excellence (PtE)

- Preparing for College and Careers
- Success Plan – Find Out Who You Are (Student, Parent, Counselor)
- 4-Year Plan
- Career Pathway

- PSAT 8/9 – PSAT – SAT
- College Fairs



Lake Central High School

Career Pathway (Example)

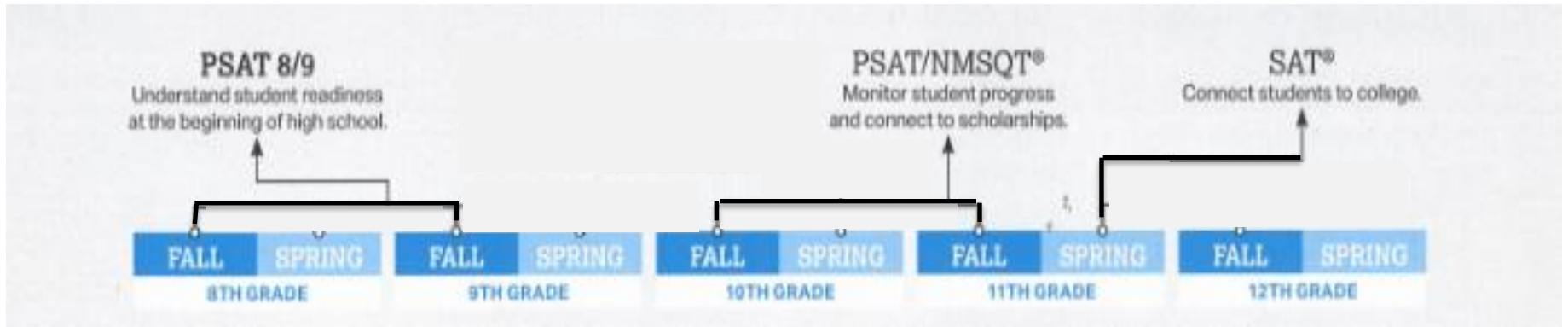
		 Lake Central High School Cluster: Business & Marketing Pathway: Business Administration Concentration: Marketing Management Focus: Sports & Entertainment Marketing									
GRADE	SEMESTER	English/ Language Arts	Math	Science	Social Studies	Electives	Electives	Electives	Electives		
9	51	English 9	Algebra I or Geometry	Biology	Geo/History of the World or World History	Fine Arts	PE-Gym if not taken during the season	Introduction to Business	(RESOURCE TIME) Preparing for College and Careers		
	52					Digital Applications & Responsibility	PE -Pool if not taken during the summer				
10	51	English 10	Geometry or Algebra II	Chemistry	~Sociology	Fine Arts	3 years of 1 language or 2 years of 2 languages World Language	Principles of Business Management	Health		
	52				Psychology	Principles of Marketing					
11	51	English 11	Algebra II or Pre-Calculus	2nd Core 40 science	~U.S. History	Personal Financial Responsibility	World Language	Sports & Entertainment Marketing	Adult Roles and Responsibility		
	52					Business Law & Ethics					
12	51	~English 12	~Pre-Calculus & Trig or ~AP Calculus or AP Stats		~Government	Strategic Marketing	World Language	Administrative & Office Management			
	52				Business						

Six highlighted courses are required to complete concentration

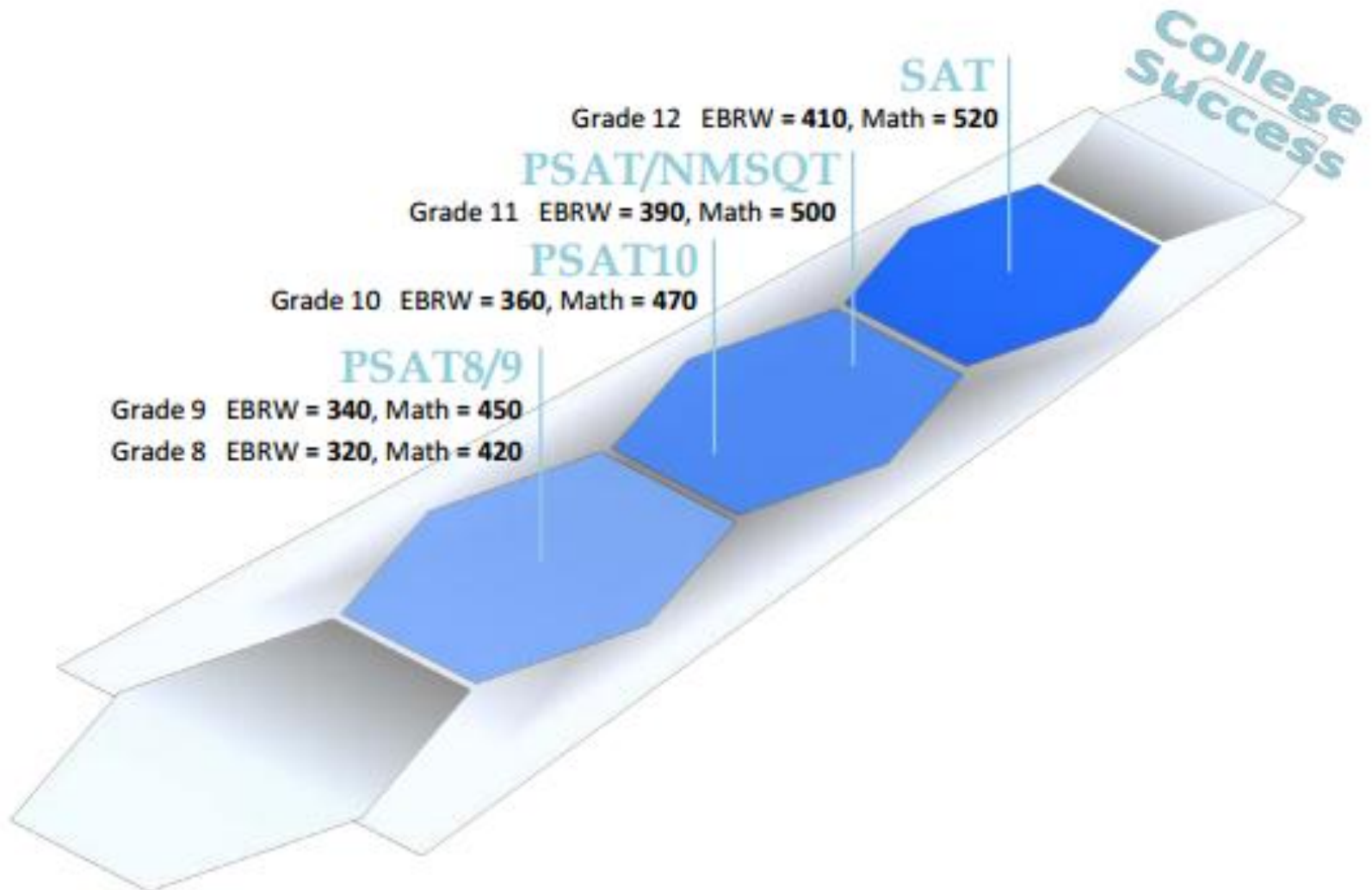
Postsecondary Courses Aligned for Potential Dual Credit**	
**See Individual Course Frameworks for alignment of high school course standards and postsecondary course objectives	
High School Course	Postsecondary Courses
Digital Applications and Responsibility 1	CNS 101 Introduction to Microcomputers
Principles of Business Management	BUSN 101 Introduction to Business
Administrative & Office Management	BUSN 105 Principles of Management
Strategic Marketing	MKTG 200 Consumer Behavior
Principles of Marketing	MKTG 101 Principles of Marketing

Lake Central High School

The SAT Suite of Assessment at Lake Central High School



Lake Central High School



Lake Central High School

The College Board benchmarks are based on students going on to undergraduate institutions and receiving a grade of “C” (considered by most universities as “satisfactory”) with a 75% likelihood in their core class of first year college math, science, English and social studies.

- Estimated percentages of students meeting the benchmarks at each grade level¹ (based on the 2015 Matched Cohort) are shown in the table below:

Assessment	N	Section	Benchmark	% Meeting
SAT	1,698,521	EBRW	410	83.3
		Math	520	53.5
		Both		52.1
PSAT/NMSQT	1,592,242	EBRW	390	83.2
		Math	500	49.9
		Both		49.0
PSAT10	1,580,161	EBRW	360	83.0
		Math	470	44.9
		Both		44.1
PSAT8/9 (9th)	14,797	EBRW	340	78.8
		Math	450	29.1
		Both		28.5
PSAT8/9 (8th)	227,994	EBRW	320	79.5
		Math	420	38.9
		Both		37.8

Lake Central High School

Academically Challenging. . .

23 Advanced Placement Classes

27 Dual Credit Classes

15 Honors Classes

Lake Central High School

Student Activities . . .

Student Participation in Extracurricular Activities

34 Clubs, 23 Varsity Athletic Teams, 6 Bands,
5 Choirs, intramurals

There is something for everyone at LCHS

Lake Central High School

Freshmen Rush. . .

August 8, 2017

- Locate Classrooms and Locker
- Program – Preparing for High School Success
- Tour Campus

Lake Central High School

First Day of School

Tuesday

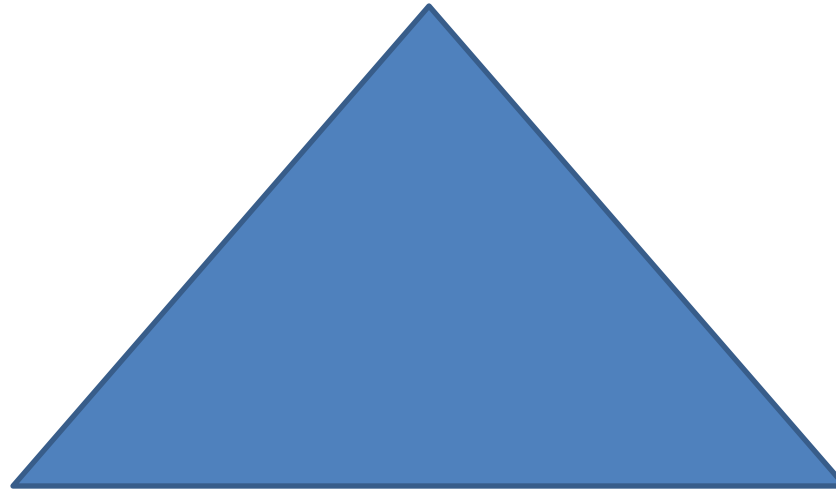
August 14, 2017

Lake Central High School

Working as a team towards student success

Student

Ready for School
Attentive in Class
Homework Completed
Request Assistance/Support
Give Best Effort



School

Positive Learning Environment
Teach Meaningful Content
Provide Academic Assistance

Parent

Monitor Progress
Positive Support
Realize Potential

Lake Central High School

- English Department
- Math Department
- Science Department
- Social Studies Department
- AP Human Geography
- World Language
- Spell Bowl
- Project Lead the Way: Engineering Technology
- Career and Technical Education
- Freshman Class Cabinet
- Dollars for Scholars
- LC Theater
- Publications
- Spellbowl
- Art
- History Club
- Band
- Color Guard
- French Club
- PE
- Guidance