

LAKE CENTRAL SCHOOL CORPORATION
Lake Central High School
KAY TRAPP BOARD ROOM – Enter Door E
8260 Wicker Avenue, St. John, IN 46373

Board Members Present

Nicole Kelly, Secretary
Janice Malchow, Board Member
Howard Marshall, Board Member
Jennifer Medlen, Vice-President
Cindy Sues, President

Board Members Not Present

Administration Present

Dr. Lawrence Veracco, Superintendent
Sarah Castaneda, Assistant Superintendent
Rebecca Gromala, Director of Student Services
Rob James, Director of Business Services
Yolanda Bracey, Director of Primary Education
Misty Scheuneman, Director of Secondary Education

Administration Not Present

Bill Ledyard, Director of Facilities

*To view the archived video of the meeting in its entirety,
go to the School Board section of website at www.lcsc.us*

*All Motions Were Passed With a 5-0
Vote Unless Otherwise Indicated*

SCHOOL BOARD MEETING MINUTES
Monday, February 19, 2024 - 7:00pm

- I. Call to Order – *Cindy Sues*
 - The meeting was called to order and Pledge of Allegiance led by Board President Cindy Sues.
- II. Agenda: Approval, Deletions, Additions – *Dr. Veracco* – **Action Required**
 - Revisions include revisions to the professional leave requests under Yolanda Bracey's section, revisions to the professional leave requests and field trip requests under Misty Scheuneman's section, and the addition of VII.G.3. (TIF Districts) under Rob James' section.
 - Jennifer Medlen moved to approve the revised Agenda. Janice Malchow seconded the motion. Motion carried.
- III. Correspondence – *Nicole Kelly*
 - There was no correspondence.
- IV. Liaison Committee Updates – *Cindy Sues*
 - A. Personnel Interview Committee: Howard Marshall
 - B. Schererville Redevelopment Commission: Nicole Kelly
 - C. Schererville Parks Department: Nicole Kelly
 - D. Lake Central Education Foundation: Janice Malchow
 - E. Legislative Committee: Janice Malchow
 - F. Dyer Parks Department: Janice Malchow
 - G. Construction Committee: Cindy Sues

- H. St. John Redevelopment Commission: Cindy Sues
- I. Dollars for Scholars: Cindy Sues
- J. Wellness Committee: Jennifer Medlen
- K. Dyer Redevelopment Commission: Jennifer Medlen

- V. Official School Board Business Topics: Consent Agenda – *Dr. Veracco* – **Action Required**
 - A. Approval of Minutes
 - Regular Board Meeting: February 5, 2024
 - B. Approval of Claims, Payroll and Extracurricular Expenditures
 - Nicole Kelly moved to approve the Consent Agenda.
 - Cindy Sues seconded the motion.
 - Motion carried.

- VI. Public Comments Regarding Action Items
 - There were no public comments regarding action items.

- VII. Official School Board Business Topics: Regular Agenda
 - A. Superintendent – *Dr. Veracco*
 - 1. Legislative Update

 - B. Assistant Superintendent – *Sarah Castaneda*
 - 1. Personnel Recommendations – **Action Required**
 - Nicole Kelly moved to approve the personnel recommendations.
 - Howard Marshall seconded the motion.
 - Motion carried.

 - C. Director of Primary Education – *Yolanda Bracey*
 - 1. Professional Leave Requests - **Action Required - Revised**
 - Howard Marshall moved to approve.
 - Janice Malchow seconded the motion.
 - Motion carried.
 - 2. Field Trip Requests - **Action Required**
 - Janice Malchow moved to approve.
 - Howard Marshall seconded the motion.
 - Motion carried.

 - D. Director of Secondary Education – *Misty Scheuneman*
 - 1. Professional Leave Requests - **Action Required - Revised**
 - Jennifer Medlen moved to approve.
 - Nicole Kelly seconded the motion.
 - Motion carried.
 - 2. Field Trip Requests - **Action Required - Revised**
 - Janice Malchow moved to approve.
 - Cindy Sues seconded the motion.
 - Motion carried.

E. Director of Student Services - *Becky Gromala*

1. Professional Leave Requests - **Action Required**

- Nicole Kelly moved to approve.
- Janice Malchow seconded the motion.
- Motion carried.

2. Special Education Funding and Results Data

F. Director of Facilities – *Bill Ledyard*

1. Award and execute Change Order #04 to Gluth Brothers Roofing Company, Inc. for the Bibich ES Building Project – Bid Package #12 – Roofing & Metal Wall Panels - **Action Required**

- Jennifer Medlen moved to approve.
- Howard Marshall seconded the motion.
- Motion carried.

2. Award and execute Change Order #01 to Circle “R” Mechanical, Inc. for the Bibich ES Mechanical Project – Bid Package #10a – HVAC Systems - **Action Required**

- Janice Malchow moved to approve.
- Cindy Sues seconded the motion.
- Motion carried.

3. Award and execute Change Order #GC-01-001 to Arctic Engineering Company for the LCHS (Freshman Center) HVAC Renovation Project - **Action Required**

- Howard Marshall moved to approve.
- Nicole Kelly seconded the motion.
- Motion carried.

G. Director of Business Services – *Rob James*

1. Donations - **Action Required**

- Nicole Kelly moved to approve.
- Janice Malchow seconded the motion.
- Motion carried.

2. Approval of Early Literacy Achievement Grant Distribution Resolution - **Action Required**

- Jennifer Medlen moved to approve.
- Janice Malchow seconded the motion.
- Motion carried.

3. TIF Districts

VIII. Public Comments – *Cindy Sues*

- There were no public comments.

IX. Board Comments and Consideration of Future Agenda Items – *Cindy Sues*

Nicole Kelly: Congratulations to Girls Basketball.

Jennifer Medlen: Congratulations to all of our great athletes, musical, and dance performers, and all of the scholastic scholars in our district.

Janice Malchow: I think it was a great weekend for a lot of the organizations. And, the science olympiad team, if you remember when they started years ago, was when they were in the old part of the building and Mary Jo Martin was in this little tiny room tucked behind the library. But over the

years now they are traveling to Michigan and Illinois for competitions and doing quite well. It's quite a growth process. And, I think the same is going to happen with robotics program at the high school that has been moving forward. Dr. Medlen is it too late for me to get involved with the wellness program since I missed the deadline?

Cindy Sues: You all have said some really great things, so I echo all of that.

- X. Board Calendar of Future Activities – *Dr. Veracco*
 - Next School Board Meeting: Monday, March 4, 2024
- XI. Adjournment – *Cindy Sues* – **Action Required**
 - Nicole Kelly moved to adjourn the meeting at 8:05pm.
 - Jennifer Medlen seconded the motion.
 - Motion carried, meeting adjourned.

Minutes of the February 19, 2024 School Board Meeting were approved and adopted by the Board of School Trustees at the March 4, 2024 School Board Meeting.

Cindy Sues, President

ATTEST:

Nicole Kelly, Secretary

SUPPORTING
DOCUMENTS
FOR MINUTES

Lake Central School Corporation

8260 Wicker Avenue
Tel: (219) 365-8507

Saint John, IN 46373
Fax: (219) 365-6406

website: lcsc.us



Lawrence Veracco, Ph.D.
Superintendent

Sarah Castaneda
Assistant Superintendent

Yolanda Bracey, Ed. D.
Director of Primary Education

Misty Scheuneman
Director of Secondary Education

Rebecca Gromala
Director of Student Services

TO: Board of School Trustees
FROM: Sarah Castaneda, Assistant Superintendent
DATE: February 15, 2024
RE: Board Meeting of February 19, 2024

Personnel

(Board action required)

We are recommending that the following be approved:

I. Classified Appointment, Resignations, Retirements, Change of Hours & Other:

A. Appointment:

1. Paola Castano, (Dyer), Paraprofessional, Lake Central High School (effective February 7, 2024).

B. Resignations:

1. Shannon Bufano, Librarian, Grimmer Middle School (effective February 19, 2024).
2. Susan Sorrentino, Paraprofessional, Clark Middle School (effective February 27, 2024).
3. Tricia Wisniewski, paraprofessional, Kahler Middle School (effective February 15, 2024).

C. Retirements:

1. Lisa Giglio, Café Product Assistant, Homan Elementary School (effective May 24, 2024); *28 years of dedicated service.*
2. Kim Talaber, Secretary/Bookkeeper, Watson Elementary School (effective May 2024); *28 years of dedicated service.*

D. Change of Hours:

1. Karina Rivera, from 6.0 to 6.5 hours per day as a Paraprofessional at Protsman Elementary School (effective February 15, 2024).

E. Other:

1. Haley Ferrell, Paraprofessional, Homan Elementary School rescinded resignation dated February 9, 2024).

II. Certified Extracurricular Appointment & Resignations:

A. Appointment:

1. Ann Downey, Assistant Girls Track Coach, Clark Middle School (effective March 2024).

B. Resignation:

1. Ann Downey, Assistant Girls Track and Field Coach, Grimmer Middle School (effective January 31, 2024).
2. Trisha Ptaszek, Ecoteens Sponsor, Clark Middle School (effective February 9, 2024).

Approval of Lake Central School Corporation Substitute Staff Appointments and Resignations – Refer to attached list of substitutes that have been hired and have resigned.

2/19/2024

	Substitutes - Hired
--	---------------------

[illegible]

Substitute - Resigned

[illegible]

Lake Central School Corporation

8260 Wicker Avenue
Tel: (219) 365-8507

Saint John, IN 46373
Fax: (219) 365-6406

website: lcsc.us



Lawrence Veracco, Ph.D.
Superintendent

Sarah Castaneda
Assistant Superintendent

Yolanda Bracey, Ed. D.
Director of Primary Education

Misty Scheuneman
Director of Secondary Education

Rebecca Gromala
Director of Student Services

TO: Board of School Trustees
FROM: Yolanda Bracey, Director of Primary Education
DATE: February 15, 2024
RE: **Board Meeting of February 19, 2024**

PROFESSIONAL LEAVE REQUESTS

REVISED

NAME	Ashley Mitsch
POSITION	Assistant Principal
SCHOOL	Bibich Elementary
EVENT	School Safety Specialist Training
DATES	2/08/2024
PLACE	Indianapolis, IN
DESCRIPTION	Final day of training for certification
SPONSORING ORGANIZATION	IDOE
EXPENSES	Estimated Meal Cost - \$0 Estimated Hotel Cost - \$0 Estimated Required Fees - \$0 Estimated Travel Cost - Mileage & Parking
FUNDING	030-26600-58000-0001

YB/vv

NAME	Sarah Wiltermood
POSITION	ELL Teacher
SCHOOL	Protsman Elementary
EVENT	Virtual Knowledge Block
DATES	2/15/2024
PLACE	Virtual
DESCRIPTION	Engaging With Vocabulary
SPONSORING ORGANIZATION	The Reading League
EXPENSES	Estimated Meal Cost - \$0 Estimated Hotel Cost - \$0 Estimated Required Fees - \$200 Estimated Travel Cost - \$0
FUNDING	Corporation Science of Reading Fund

NAME	Rod Smith
POSITION	Teacher
SCHOOL	Kolling Elementary
EVENT	Boys State Swim Meet
DATES	2/22 - 2/23/2024
PLACE	Indianapolis, IN
DESCRIPTION	Assistant Boys Swim Coach traveling with team to state competition
SPONSORING ORGANIZATION	IHSAA
EXPENSES	Estimated Meal Cost - \$0 Estimated Hotel Cost - \$0 Estimated Required Fees - \$0 Estimated Travel Cost - \$0
FUNDING	Athletics

NAME	Nicole Batres / Amber O'Brien / Melissa Dillard, Tina DuBrock / Christine Barajas
POSITION	Teachers
SCHOOL	Bibich / Peifer / Protsman / Kolling
EVENT	Virtual Knowledge Blocks
DATES	2/28/2024
PLACE	Virtual
DESCRIPTION	Meaningful Morphology / Phonic Knowledge
SPONSORING ORGANIZATION	The Reading League
EXPENSES	Estimated Meal Cost - \$0 Estimated Hotel Cost - \$0 Estimated Required Fees - \$200 x (5) Estimated Travel Cost - \$0
FUNDING	Corporation Science of Reading Fund

NAME	D'Ann McDermott / Melissa Dillard / Rebeka Smith
POSITION	Literacy Coach / Teacher / Teacher
SCHOOL	District / Protsman Elementary / Kolling
EVENT	Virtual Knowledge Blocks
DATES	3/06/2024
PLACE	Virtual
DESCRIPTION	Building Oral Language to Boost Comprehension and Composition / 6 Step Lesson Plan for Decoding, Spelling and Fluency
SPONSORING ORGANIZATION	The Reading League
EXPENSES	Estimated Meal Cost - \$0 Estimated Hotel Cost - \$0 Estimated Required Fees - \$200 x (3) Estimated Travel Cost - \$0
FUNDING	Corporation Science of Reading Fund

NAME	D'Ann McDermott / Katy Rossi
POSITION	Literacy Coach / Teacher
SCHOOL	District / Peifer
EVENT	Virtual Knowledge Block
DATES	4/03/2024
PLACE	Virtual
DESCRIPTION	Meaningful Morphology / Phonic Knowledge
SPONSORING ORGANIZATION	The Reading League
EXPENSES	Estimated Meal Cost - \$0 Estimated Hotel Cost – \$0 Estimated Required Fees – \$200 x (2) Estimated Travel Cost – \$0
FUNDING	Corporation Science of Reading Fund

NAME	Tina DuBrock
POSITION	Teacher
SCHOOL	Protsman Elementary
EVENT	Virtual Knowledge Block
DATES	4/16/2024
PLACE	Virtual
DESCRIPTION	Understanding Dyslexia
SPONSORING ORGANIZATION	The Reading League
EXPENSES	Estimated Meal Cost - \$0 Estimated Hotel Cost – \$0 Estimated Required Fees – \$200 Estimated Travel Cost – \$0
FUNDING	Corporation Science of Reading Fund

NAME	Nicole Batres / Melissa Dillard
POSITION	Teachers
SCHOOL	Bibich / Protsman
EVENT	Virtual Knowledge Blocks
DATES	4/24/2024
PLACE	Virtual
DESCRIPTION	Foundations of the Science of Reading / Engaging With Vocabulary
SPONSORING ORGANIZATION	The Reading League
EXPENSES	Estimated Meal Cost - \$0 Estimated Hotel Cost – \$0 Estimated Required Fees – \$200 x (2) Estimated Travel Cost – \$0
FUNDING	Corporation Science of Reading Fund

NAME	Taylor Popa, Melissa Ballenger, Tina DuBrock, Sarah Stamper, Kristin Talaber, Shelli White
POSITION	Teachers
SCHOOL	Protsman Elementary
EVENT	Kindergarten Field Trip
DATES	4/24/2024
PLACE	Palos Park, IL
DESCRIPTION	Accompany Kindergarten students on a field trip to The Children's Farm
SPONSORING ORGANIZATION	Protsman Kindergarten Team
EXPENSES	Estimated Meal Cost - \$0 Estimated Hotel Cost – \$0 Estimated Required Fees – \$0 Estimated Travel Cost – \$0
FUNDING	Self-Funded

NAME	Amber O'Brien, Shannon De St. Jean, Katy Rossi, Morgan Kleinaman / Melissa Dillard
POSITION	Teachers
SCHOOL	Peifer / Protsman
EVENT	Virtual Knowledge Blocks
DATES	5/15/2024
PLACE	Virtual
DESCRIPTION	6 Step Lesson Plan for Spelling, Decoding and Fluency / Building Oral Language to Boost Comprehension and Composition
SPONSORING ORGANIZATION	The Reading League
EXPENSES	Estimated Meal Cost - \$0 Estimated Hotel Cost - \$0 Estimated Required Fees - \$200 x (5) Estimated Travel Cost - \$0
FUNDING	Corporation Science of Reading Fund

Lake Central School Corporation

8260 Wicker Avenue

St. John, IN 46373

Tel: (219) 365-8507

Fax: (219) 365-6406

website: lcsc.us



Lawrence Veracco, Ph.D.
Superintendent

Sarah Castaneda
Assistant Superintendent

Yolanda Bracey, Ed.D.
Director of Primary Education

Misty Scheuneman
Director of Secondary Education

Rebecca Gromala
Director of Student Services

TO: Board of School Trustees

FROM: Yolanda Bracey, Director of Primary Education

DATE: February 15, 2024

RE: **Board Meeting of February 19, 2024**

FIELD TRIP REQUESTS

Taylor Popa, Melissa Ballenger, Tina DuBrock, Sarah Stamper, Kristin Talaber and Shelli White, Kindergarten teachers at Protsman Elementary, request to take approximately (119) Kindergarten students to Palos Park, IL on April 24, 2024. The students will visit The Children's Farm and learn basic farm and animal facts. This is a self-funded field trip.

YB/vv

Lake Central School Corporation

8260 Wicker Avenue
Tel: (219) 365-8507

Saint John, IN 46373
Fax: (219) 365-6406

website: lcsc.us



Lawrence Veracco, Ph.D.
Superintendent

Sarah Castaneda
Assistant Superintendent

Yolanda Bracey, Ed. D.
Director of Primary Education

Misty Scheuneman
Director of Secondary Education

Rebecca Gromala
Director of Student Services

TO: Board of School Trustees
FROM: Misty Scheuneman, Director of Secondary Education
DATE: February 15, 2024
RE: **Board Meeting of February 19, 2024**

PROFESSIONAL LEAVE REQUESTS

REVISED

NAME	Jeff Kilinski / Kaitlyn Krachenfels
POSITION	Girls Swim Coach / Teacher and Coach
SCHOOL	LCHS / Watson and LCHS
EVENT	Girls State Swim Meet
DATES	2/08 - 2/10/2024
PLACE	Indianapolis, IN
DESCRIPTION	Girls State Swim Meet
SPONSORING ORGANIZATION	IUPUI
EXPENSES	Estimated Meal Cost - \$0 Estimated Hotel Cost - \$0 Estimated Required Fees - \$0 Estimated Travel Cost - \$0
FUNDING	Athletics

NAME	Joe Huppenthal, Rick Gard, Jenelle Fazekas and Ashley Michalski
POSITION	Teachers / Coaches
SCHOOL	LCHS
EVENT	Girls Basketball State Finals
DATES	2/22 - 2/24/2024
PLACE	Indianapolis, IN
DESCRIPTION	Girls State Basketball Game
SPONSORING ORGANIZATION	IHSAA
EXPENSES	Estimated Meal Cost - \$0 Estimated Hotel Cost - \$0 Estimated Required Fees - \$0 Estimated Travel Cost - \$0
FUNDING	Athletics

NAME	Jeff Kilinski, Heidi Moffett
POSITION	Teachers / Coaches
SCHOOL	LCHS
EVENT	Boys State Swim Meet
DATES	2/22 - 2/24/2024
PLACE	Indianapolis, IN
DESCRIPTION	Boys State Swim Meet
SPONSORING ORGANIZATION	IHSAA
EXPENSES	Estimated Meal Cost - \$0 Estimated Hotel Cost - \$0 Estimated Required Fees - \$0 Estimated Travel Cost - \$0
FUNDING	Athletics

NAME	Sue Schweitzer, Valerie Gardner, Scott King
POSITION	Ed Tech Trainer, HS Math Coach / MS Math Coach
SCHOOL	LCHS / District
EVENT	Leadership, Coaching and Effective Training
DATES	2/26 - 2/27/2024
PLACE	West Lafayette, IN
DESCRIPTION	Utilizing the 2023 IAS and related documents that consider time challenges and structures for change
SPONSORING ORGANIZATION	Education Service Centers of Indiana
EXPENSES	Estimated Meal Cost - \$35 x (3) Estimated Hotel Cost – \$200.48 x (3) Estimated Required Fees – \$0 Estimated Travel Cost – Mileage x (3)
FUNDING	Corporation Title II

NAME	Tom Halterman
POSITION	Teacher
SCHOOL	LCHS
EVENT	State Strength Coaches Conference
DATES	3/01 - 3/02/2024
PLACE	Indianapolis, IN
DESCRIPTION	State Strength Coaches Conference
SPONSORING ORGANIZATION	National High School Strength Coaches Association
EXPENSES	Estimated Meal Cost - \$35 Estimated Hotel Cost – \$130 Estimated Required Fees – \$50 Estimated Travel Cost – Mileage
FUNDING	Athletics

NAME	Cynthia Lollis
POSITION	Teacher
SCHOOL	Kahler Middle School
EVENT	Universal Design of Inclusive K-12 Computer Science Instruction Workshop
DATES	3/06 - 3/07/2024
PLACE	Fishers, IN
DESCRIPTION	Workshop to help improve computer classroom experience for students with disabilities
SPONSORING ORGANIZATION	Nextech
EXPENSES	Estimated Meal Cost - \$35 Estimated Hotel Cost - \$175 Estimated Required Fees - \$0 Estimated Travel Cost - Mileage
FUNDING	010-1-11200-81000-0004

NAME	Kendal Smith
POSITION	Teacher
SCHOOL	LCHS
EVENT	Chemistry Competition
DATES	4/05 - 4/07/2024
PLACE	St. Louis, MO
DESCRIPTION	AP Chemistry competition at Washington University
SPONSORING ORGANIZATION	Washington University
EXPENSES	Estimated Meal Cost - \$0 Estimated Hotel Cost - \$0 Estimated Required Fees - \$0 Estimated Travel Cost - \$0
FUNDING	Self-Funded

NAME	Ralph Holden / Joe Skvarek
POSITION	Teachers/Coaches
SCHOOL	LCHS
EVENT	Girls Tennis Tournament
DATES	4/19 - 4/20/2024
PLACE	Crawfordsville, IN
DESCRIPTION	Girls Tennis Tournament
SPONSORING ORGANIZATION	Crawfordsville High School
EXPENSES	Estimated Meal Cost - \$0 Estimated Hotel Cost - \$0 Estimated Required Fees - \$0 Estimated Travel Cost - \$0
FUNDING	Athletics

NAME	Ralph Holden / Joe Skvarek
POSITION	Teachers/Coaches
SCHOOL	LCHS
EVENT	Girls Tennis Tournament
DATES	4/26 - 4/27/2024
PLACE	Muncie, IN
DESCRIPTION	Girls Tennis Tournament
SPONSORING ORGANIZATION	Delta High School
EXPENSES	Estimated Meal Cost - \$0 Estimated Hotel Cost - \$0 Estimated Required Fees - \$0 Estimated Travel Cost - \$0
FUNDING	Athletics

Lake Central School Corporation

8260 Wicker Avenue
Tel: (219) 365-8507

Saint John, IN 46373
Fax: (219) 365-6406

website: lcsc.us



Lawrence Veracco, Ph.D.
Superintendent

Sarah Castaneda
Assistant Superintendent

Yolanda Bracey, Ed. D.
Director of Primary Education

Misty Scheuneman
Director of Secondary Education

Rebecca Gromala
Director of Student Services

TO: Board of School Trustees

FROM: Misty Scheuneman, Director of Secondary Education

DATE: February 15, 2024

RE: **Board Meeting of February 19, 2024**

FIELD TRIP REQUESTS

REVISED

Jeff Kilinski and Kaitlyn Krachenfels, girls swim coaches at LCHS, request to take approximately (6) members of the Girls Swim Team to Indianapolis on February 8 - February 10, 2024. The girls will compete in a state swim competition at IUPUI. All fees will be covered by athletics.

Joe Huppenthal, Rick Gard, Jenelle Fazekas and Ashley Michalski, teachers/coaches at LCHS, request to take approximately (16) members of the Girls Varsity Basketball team to Indianapolis, IN on February 22 - February 24, 2024 to compete in the State Finals at Cambridge Fieldhouse. All fees will be covered by athletics.

Jeff Kilinski and Heidi Moffett, teachers/coaches at LCHS, request to take approximately (5) members of the Boys Swim Team to Indianapolis, IN on February 22 - February 24, 2024. The team will compete in the Boys State Swim Meet at IUPUI. All fees will be covered by athletics.

MS/vv

Kendal Smith, teacher at LCHS, requests to take approximately (12) members of the LCHS AP Chem Team to St. Louis, MO on April 5 - April 7, 2024. The team will compete against some of the best schools in the midwest at Washington University. This is a self-funded trip.

Ralph Holden and Joe Skvarek, girls tennis coaches at LCHS, request to take approximately (10) members of the Girls Tennis Team to Crawfordsville, IN on April 19 - April 20, 2024. The girls will compete in a tennis tournament at Crawfordsville High School. All fees will be covered by athletics. They also request to take the same group to Muncie, IN on April 26 - April 27, 2024 to compete in a tennis tournament at Delta High School. All fees will be covered by athletics.

Lake Central School Corporation

8260 Wicker Avenue

St. John, IN 46373

Tel: (219) 365-8507

Fax: (219) 365-6406

website: lcsc.us



Lawrence Veracco, Ph.D.
Superintendent

Sarah Castaneda
Assistant Superintendent

Yolanda Bracey, Ed.D.
Director of Primary Education

Misty Scheuneman
Director of Secondary Education

Rebecca Gromala
Director of Student Services

TO: Board of School Trustees
FROM: Rebecca Gromala, Director of Student Services
DATE: February 15, 2025
RE: **Board Meeting of February 19, 2024**

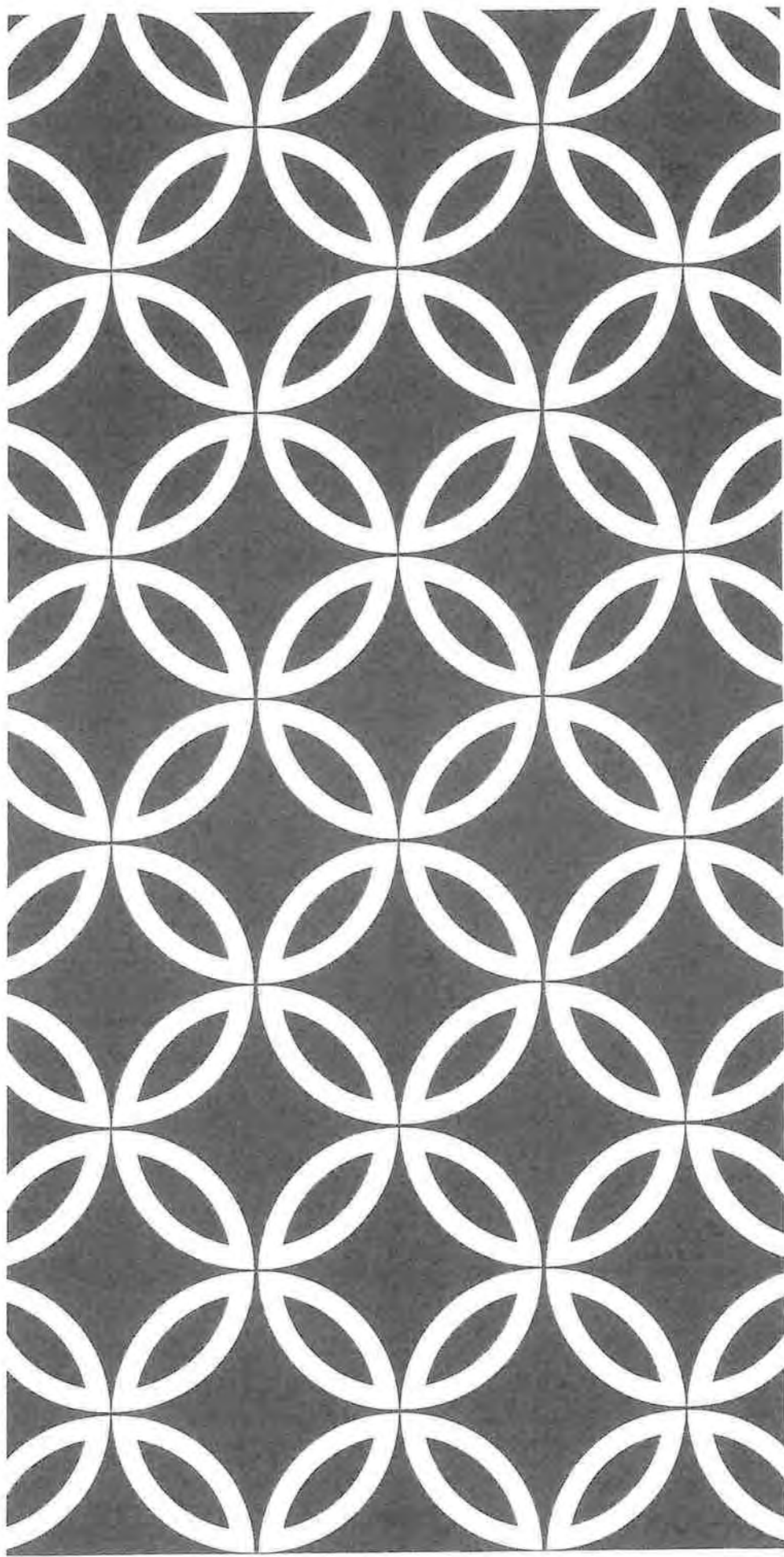
PROFESSIONAL LEAVE REQUESTS

NAME	Madeline Hill / Dana Rund / Brenna Krygsheld / Tisa Augsburg
POSITION	School Service Provider / Occupational Therapist /SLP / Special Education Teacher
SCHOOL	Bibich Elementary
EVENT	Zones of Regulation Training
DATES	2/20/2024
PLACE	Virtual
DESCRIPTION	Introduction to the Zones of Regulation
SPONSORING ORGANIZATION	The Zones of Regulation, Inc.
EXPENSES	Estimated Meal Cost - \$0 Estimated Hotel Cost – \$0 Estimated Required Fees – \$110 x (4) Estimated Travel Cost – \$0
FUNDING	646-0-12220-31200-0005

RG/vv

NAME	Rebecca Butler
POSITION	School Psychologist
SCHOOL	Homan, Kolling, Bibich
EVENT	Autism Diagnostic Observation Schedule - 2nd Edition Introductory/Clinical Workshop
DATES	3/01/2024
PLACE	Virtual
DESCRIPTION	Training for administration of the ADOS-2
SPONSORING ORGANIZATION	ADOS
EXPENSES	Estimated Meal Cost - \$0 Estimated Hotel Cost – \$0 Estimated Required Fees – \$525.00 Estimated Travel Cost – \$0
FUNDING	646-0-21420-31200-0006

NAME	Michele Kutemeier
POSITION	Applied Skills Teacher
SCHOOL	Kahler Middle School
EVENT	Language Acquisition (LAMP) Training
DATES	3/12/2024
PLACE	Clark Middle School
DESCRIPTION	training for the LAMP ACC
SPONSORING ORGANIZATION	Center for AAC & Autism
EXPENSES	Estimated Meal Cost - \$0 Estimated Hotel Cost – \$0 Estimated Required Fees – \$169 Estimated Travel Cost – \$0
FUNDING	646-0-12220-31200-0004



2023 SPECIAL EDUCATION DATA

SPECIAL EDUCATION FUNDING

Funding based on student count and disability areas

Child Count conducted on December 1, 2023

Student counts determine Additional Pupil Count (APC) funding and contribute to census data used for Part B grant allocations

Total APC for Lake Central: \$6,751,866 (increase of \$626,860)

APC FUNDING GROUPS AND AMOUNTS

DECEMBER 2023 SE COUNT

Group	Eligibilities Included	Dollars per Student	Number of Students
Group 1	Multiple Disabilities, Orthopedic Impairment, Blind/Low Vision, Deaf/Hard of Hearing, Emotional Disability FT, Severe Cognitive Disability, Autism Spectrum Disorder, Traumatic Brain Injury	\$11,104 (+\$529)	313 (+29)
Group 2	Emotional Disability Other, Specific Learning Disability, Mild Cognitive Disability, Moderate Cognitive Disability, Other Health Impairment	\$2,790 (+\$375)	803 (+18)
Group 3* (may be counted twice)	Language or Speech Impairment	\$525 (+25)	852 (+64)
Preschool	All Eligibilities	\$3,638 (+\$488)	148 (-15)

TOTAL NUMBER OF STUDENTS RECEIVING SPECIAL EDUCATION SERVICES

Year	Number of Students
2023	1603
2022	1551
2021	1520
2020	1509
2019	1515
2018	1447
2017	1371
2016	1421
2015	1371
2014	1414
2013	1459

22-23 RESULTS DRIVEN ACCOUNTABILITY RESULTS

- Overall Rating – Meets Requirements
- Data Reporting Score – 100
- Compliance – 100
 - Huge thank you to our evaluation staff for prioritizing evaluation timelines
- Results Score – 58
 - Concerns: Growth on ILEARN math for students with disabilities, Alternate Assessment participation, LRE placement

RESULTS DATA

Total Results Score: 25

Weighted Index for Results: 58.00

3B: ILEARN - Percent of Students with Disabilities Performing at "Approaching Proficiency" or Higher

Math



English/Language Arts



3B: ILEARN - Median Student Growth Percentile for Students with Disabilities

Math



English/Language Arts



IREAD-3 - Percent of Students with Disabilities Proficient



Indiana Alternative Assessment (IAM) - Percent of Students Participating



1: Percent of Students with Disabilities Graduated with Any Diploma Designation



5A: Percent of Students with LRE Code of 50 (80% time in Gen Ed Classroom)



[Download Data](#)

Indiana Department of Education | Office of Special Education

I AM PROFICIENCY DATA

- Does not factor in to our results data
- I AM measures student mastery of grade-level Content Connectors.
- We should celebrate the work of our teachers who are working with our students with the greatest challenges.

3C: I AM Proficiency Data - Students with Disabilities Performing at "Approaching Proficiency" or Higher Grades 3-8 and 11

Math



English/Language Arts





AIA® Document G731™ – 2019

Change Order, Construction Manager as Adviser Edition

PROJECT: <i>(name and address)</i> LCSC Additions & Renovations to Bibich Elementary 14600 W. 81 st Avenue, Dyer, IN 46311	CONTRACT INFORMATION: Contract For: BP#12 Roofing & Metal Wall Panels Date: 5/30/2023	CHANGE ORDER INFORMATION: Change Order Number: 4 Date: 2/8/2024
OWNER: <i>(name and address)</i> Lake Central School Corporation 8260 Wicker Avenue, St. John, IN 46373	ARCHITECT: <i>(name and address)</i> Schmidt Associates, Inc. 415 Massachusettes Avenue, Indianapolis, IN 46204	CONSTRUCTION MANAGER: <i>(name and address)</i> CORE Construction Indiana, LLC 833 Lincoln Highway, Suite 120W, Schererville, IN 46375
CONTRACTOR: <i>(name and address)</i> Gluth Brothers Roofing Company, Inc. 6701 Osborn Avenue, Hammond, IN 46323		

THE CONTRACT IS CHANGED AS FOLLOWS:

(Insert a detailed description of the change and, if applicable, attach or reference specific exhibits. Also include agreed upon adjustments attributable to executed Construction Change Directives.)

Furnish and install additional metal panels to replace panels at existing column damaged during contruction activities.

The original Contract Sum was	\$ 953,951.00
Net change by previously authorized Change Orders	\$ 48,865.00
The Contract Sum prior to this Change Order was	\$ 1,002,816.00
The Contract Sum will be increased by this Change Order in the amount of	\$ 4,105.00
The new Contract Sum including this Change Order will be	\$ 1,006,921.00

The Contract Time will be increased by Zero (0) days.

The Contractor's Work shall be substantially complete on dates per contract schedule.

NOTE: This Change Order does not include adjustments to the Contract Sum or Guaranteed Maximum Price, or the Contract Time, that have been authorized by Construction Change Directive until the cost and time have been agreed upon by both the Owner and Contractor, in which case a Change Order is executed to supersede the Construction Change Directive.

NOT VALID UNTIL SIGNED BY THE ARCHITECT, CONSTRUCTION MANAGER, CONTRACTOR, AND OWNER.

Schmidt Associates, Inc.

ARCHITECT *(Firm name)*

SIGNATURE

PRINTED NAME AND TITLE

DATE:

Gluth Brothers Roofing Company, Inc

CONTRACTOR *(Firm name)*

SIGNATURE

Eric Gluth

PRINTED NAME AND TITLE

DATE:

CORE Construction, LLC

CONSTRUCTION MANAGER *(Firm name)*

SIGNATURE

Nicolas Waldmarson - Project Manager

PRINTED NAME AND TITLE

DATE:

Lake Central School Corporation

OWNER *(Firm name)*

SIGNATURE

William Ledyard

PRINTED NAME AND TITLE

DATE:

AIA® Document G731™ – 2019

Change Order, Construction Manager as Adviser Edition

PROJECT: *(name and address)*
LCSC Additions & Renovations to Bibich Elementary
14600 W. 81st Avenue, Dyer, IN 46311
OWNER: *(name and address)*
Lake Central School Corporation
8260 Wicker Avenue, St. John, IN 46373

CONTRACTOR: *(name and address)*
Circle "R" Mechanical, Inc.
6620 Shepherd Avenue, Portage, IN 46368

CONTRACT INFORMATION:
Contract For: BP#10a - HVAC Systems
Date: 5/18/2023
ARCHITECT: *(name and address)*
Schmidt Associates, Inc.
415 Massachusettes Avenue,
Indianapolis, IN 46204

CHANGE ORDER INFORMATION:
Change Order Number: 1
Date: 2/8/2024
CONSTRUCTION MANAGER: *(name and address)*
CORE Construction Indiana, LLC
833 Lincoln Highway, Suite 120W, Schererville,
IN 46375

THE CONTRACT IS CHANGED AS FOLLOWS:

(Insert a detailed description of the change and, if applicable, attach or reference specific exhibits. Also include agreed upon adjustments attributable to executed Construction Change Directives.)

Furnish and install additional ductwork, insulation, and GRDs per RFI #30 which provides conditioned air to rooms not shown on original contract drawings.

The original Contract Sum was	\$ 2,684,000.00
Net change by previously authorized Change Orders	\$ 0.00
The Contract Sum prior to this Change Order was	\$ 2,684,000.00
The Contract Sum will be increased by this Change Order in the amount of	\$ 5,359.09
The new Contract Sum including this Change Order will be	\$ 2,689,359.09

The Contract Time will be increased by Zero (0) days.

The Contractor's Work shall be substantially complete on dates per contract schedule.

NOTE: This Change Order does not include adjustments to the Contract Sum or Guaranteed Maximum Price, or the Contract Time, that have been authorized by Construction Change Directive until the cost and time have been agreed upon by both the Owner and Contractor, in which case a Change Order is executed to supersede the Construction Change Directive.

NOT VALID UNTIL SIGNED BY THE ARCHITECT, CONSTRUCTION MANAGER, CONTRACTOR, AND OWNER.

Schmidt Associates, Inc.
ARCHITECT *(Firm name)*

SIGNATURE
Eric Wolf
PRINTED NAME AND TITLE

DATE:

Circle "R" Mechanical, Inc
CONTRACTOR *(Firm name)*

SIGNATURE
PRINTED NAME AND TITLE

DATE:

CORE Construction, LLC
CONSTRUCTION MANAGER *(Firm name)*

SIGNATURE
Nicolas Waldmarson - Project Manager
PRINTED NAME AND TITLE

DATE:

Lake Central School Corporation
OWNER *(Firm name)*

SIGNATURE
William Ledyard
PRINTED NAME AND TITLE

DATE:



Building Package - Contingency Use Authorization #4

Lake Central School Corporation

Date Sent: 12/06/2023

8260 Wicker Avenue

Job: 23-20-900

St. John, IN 46373

LCSC Additions & Renovations to Bibich

Description of Authorized Change:

#	Description	Amount
1	Gluth Brothers - Added metal panels to replace old damaged ones at Area A	4,105.00
2	Circle R - Added ductwork, insulation & diffusers inside existing building at areas where time-out rooms are located that were not shown on contract drawings	5,359.09
		<hr/> 9,464.09

Due to the nature of this change and its impact on the current schedule, we would request that an additional 0 day(s) be added to the project's final completion date. Contractor reserves the right to request additional time and extended job cost beyond requested amounts when actual schedule impact has been determined.

Original Contingency Amount	997,505.00
Prior Contingency Amount Used	123,415.00
Current Contingency Amount	874,090.00
Decrease By This Change	(9,464.09)
Remaining Contingency Amount	864,625.91

By: 
Lake Central School Corporation

By: 
Schmidt Associates Inc.

By: 
CORE Construction Indiana, LLC

Date: 2/6/24

Date: 02/08/2024

Date: 2/6/24

Brian Gluth
H. Russell Gluth
Eric Gluth
Randall X. Gluth



6701 Osborn Avenue
Hammond, IN 46323
(219) 844-5536
(800) 82-GLUTH
Fax: (219) 845-6953
www.gluthbrothersroofing.com

December 18, 2023

CORE Construction
833 West Lincoln Hwy
Schererville, IN 46375

Job Ref.: LCSC – Bibich Elementary
14600 W 81st St.
Dyer, IN 46311

Additional Work – Metal Panels

Replace the damaged panels as requested (11/8/23).

Panels were added to the order –

- 1 full height panel, 3 panels that go up to the bottom of the exterior soffit.

ADD: \$ 4,105.00

Submitted By: Eric Gluth

Since 1886
"Experience and a name you can trust!"



Sheet Metal • Heating • Air Conditioning
Ventilation • Plumbing • Fabrication • Service
Certified Air and Water Balancing
Temperature Control

Women Owned Business Enterprise (WBE)

JANUARY 18, 2024

CORE CONSTRUCTION
NICOLAS WALDMARSON
833 LINCOLN HWY., SUITE 120W
SCHERERVILLE, IN 46375

RE: BIBICH SCHOOL MECHANICAL PACKAGE, RFI-30

CP-1

Circle "R" Mechanical proposes to furnish labor and material for the HVAC portion for the above named project for a total price of \$5,359.09

The above price includes:

1. (2) – SD12, 5" Ø, (1) – SD24, 6" Ø, (2)– 24 x 12 transfer grilles
2. Ductwork and insulation (see the attached material list)
3. Shop labor and delivery
4. CAD/as-builts
5. Certified test & balance
6. Insulator sub
7. Performance bond

The above price does not include:

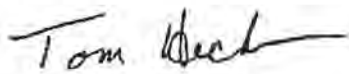
1. Sales tax

Trade	Hours		Per Hour	Total
Sheetmetal Journeyman	7.00	@	104.55	731.85
Sheetmetal Foreman	7.00	@	110.90	776.30
Sheetmetal Shop Labor & Delivery	7.00	@	120.00	840.00
CAD/as-builts	4.00	@	125.45	501.80
HVAC Material Cost	861.00			861.00
Equipment/Tools	350.00			350.00
CRM Subtotal				4,060.95
Subcontractor/Insulation	644.00			644.00
Subcontractor/Test & Balance	120.00			120.00
Subcontractor Subtotal				764.00
Overhead & Profit / Subcontractors			5%	38.20
Overhead & Profit / CRM		@	10%	406.10
Performance Bond	Yes			89.84
TOTAL				5,359.09



Thank you for the opportunity to quote you on this project. We are looking forward to working with you!

Respectfully
Circle "R" Mechanical

A handwritten signature in black ink that reads "Tom Heckman". The signature is written in a cursive style with a long horizontal stroke at the end.

Tom Heckman



SPIRAL gaskets.

Bibich
JOB NAME 23-0204 -TH RFI Area A

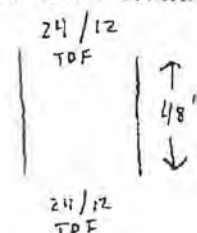
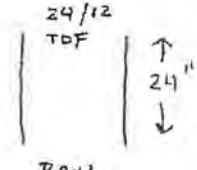
CIRCLE "R" MECHANICAL, INC.

PRESS CLASS - 2 "

INSULATION
Thick ☒
Sizes include insulation yes

DATE NEEDED _____		PRESS CLASS - 2 "		INSULATION	
RFI - VAV A3-01/A5-06	No. Req. _____ MARK _____ SPECIAL INSTRUCTIONS _____	<u>90's</u> 1- 5" ϕ <u>45's</u> 1- 6" ϕ 3- 5" ϕ <i>LONG THROAT RADIUS</i>	No. Req. _____ MARK _____ SPECIAL INSTRUCTIONS _____	<u>Hetos</u> 1- 5" <u>w/dampers</u>	No. Req. _____ MARK _____ SPECIAL INSTRUCTIONS _____
<u>Reducers</u> 1- 10"-6" ϕ <u>TAPERED</u>	No. Req. _____ MARK _____ SPECIAL INSTRUCTIONS _____	<u>ϕ PIPE</u> 5" - 40ft 6" - 10ft 10" - 10ft 12" - 10ft	No. Req. _____ MARK _____ SPECIAL INSTRUCTIONS _____	<u>Couplings</u> 1- 5" ϕ	No. Req. _____ MARK _____ SPECIAL INSTRUCTIONS _____
<u>VOLUME dampers</u> 1- 6" ϕ 1- 10" ϕ 1- 5" ϕ	No. Req. _____ MARK _____ SPECIAL INSTRUCTIONS _____	Please Price and send to Tom. Thanks	No. Req. _____ MARK _____ SPECIAL INSTRUCTIONS _____		No. Req. _____ MARK _____ SPECIAL INSTRUCTIONS _____
<u>Saddle Taps</u> 1- 10" on 10" ϕ 1- 5" on 10" ϕ	No. Req. _____ MARK _____ SPECIAL INSTRUCTIONS _____		No. Req. _____ MARK _____ SPECIAL INSTRUCTIONS _____		No. Req. _____ MARK _____ SPECIAL INSTRUCTIONS _____



JOB NAME <u>Bloch</u> <u>23-0204-TH</u> RFI <u>Area A</u>		CIRCLE "R" MECHANICAL, INC.		INSULATION	
DATE NEEDED _____		PRESS CLASS - 2"		Thick <u>1"</u> Sizes Include Insulation <u>YES</u>	
RFI VAV AS-06 Transfer Air	No. Req. <u>1</u> MARK _____ SPECIAL INSTRUCTIONS _____		No. Req. <u>2</u> MARK _____ SPECIAL INSTRUCTIONS _____		No. Req. _____ MARK _____ SPECIAL INSTRUCTIONS _____
	No. Req. <u>2</u> MARK _____ SPECIAL INSTRUCTIONS _____	Please Price and send to Tom. Thanks	No. Req. _____ MARK _____ SPECIAL INSTRUCTIONS _____		No. Req. _____ MARK _____ SPECIAL INSTRUCTIONS _____
	No. Req. _____ MARK _____ SPECIAL INSTRUCTIONS _____		No. Req. _____ MARK _____ SPECIAL INSTRUCTIONS _____		No. Req. _____ MARK _____ SPECIAL INSTRUCTIONS _____



COLEMAN INSULATION COMPANY

890 Wabash Avenue, Suite B
Chesterton, Indiana 46304
(219) 929-6492
(219) 926-5310 Fax
colemaninsulation@frontier.com

January 18, 2024

Circle "R" Mechanical, Inc.
6620 Shepherd Avenue
Portage, IN 46368

Attn: Mr. Tom Heckman

Ref: Bibich Elementary School Mechanical Package
14600 81st Avenue
Dyer, IN
RFI-30 Area A

Dear Tom,

We are pleased to submit our proposal to you for furnishing all required labor, material, tools, equipment and supervision for the mechanical insulation on the above-mentioned project per RFI-30.

Our lump sum price for the insulation of additional round ductwork is \$644.00.

Labor -	\$380.00
Material -	<u>\$264.00</u>
	\$644.00

We wish to thank you for this opportunity. If we can be of any further assistance, please feel free to call.

Very truly yours,

Melissa Coleman
Coleman Insulation Company, President

*Women Owned Business Enterprise (WBE)
Commercial and Industrial Insulation*



Tom Heckman

From: Nick Gritsonis <nickgritsonis@lelund.com>
Sent: Wednesday, January 17, 2024 4:01 PM
To: Tom Heckman
Subject: Re: FW: Bibich RFI

Tom
\$350.00 including freight to your shop

Nick Gritsonis
nick@lelund.com
630-776-0183 - direct
630-627-9986 - office

On Wed, Jan 17, 2024 at 3:14 PM Tom Heckman <tom@circlermechanical.com> wrote:

I need pricing for:
1- SD24 - 6" Ø
2- SD12 - 5" Ø
2- EG 24/12 transfer grille

Tom Heckman

Phone: 1 (219) 787-5566
Mobile: 1 (219) 746-2950
Web: www.circlermechanical.com
Email: tom@circlermechanical.com
6620 Shepherd Ave, Portage, IN 46368

-----Original Message-----

From: Andy Sacks <asacks@circlermechanical.com>
Sent: Wednesday, January 17, 2024 12:51 PM
To: Tom Heckman <tom@circlermechanical.com>
Subject: Re: Bibich RFI

1- S/D24-6
2- S/D12-5
2- EC24/12 transfer grill

Sent from my iPhone

> On Jan 17, 2024, at 11:41 AM, Tom Heckman <tom@circlermechanical.com> wrote:
> I need the register or diffuser tag designation.



Better Foresight
Better Insight
Better On-Site

317.263.6226
Indianapolis | Louisville
schmidt-arch.com

Change Order GC-1-001

PROJECT: 2021-084.LCH Lake Central HS Freshman Center HVAC Improvements DATE: 2/9/2024

CHANGE ORDER FOR: Water Heater and Storage Tank CONTRACT ID: GC-1

TO: Arctic Engineering CHANGE ORDER: GC-1-001

SCOPE OF WORK

ITEM ID	PCO SUBJECT - PRICING ITEM SUBJECT	COST
PCO-001-001	Water Heater and Storage Tank - Water Heater and Storage Tank	\$98,800.00

Original Contract Total: \$5,608,950.00

Previously Approved Change Orders: \$0.00

Contract Total Prior to this Change Order was: \$5,608,950.00

Changes Made by This Change Order: \$98,800.00

New Contract Total: \$5,707,750.00

Contract Time will be changed by: 0 Days

Substantial Completion as of the date of this Change Order is:

CONTRACTOR	OWNER	ARCHITECT
By: Greg Pahl Piping Division Manager (Arctic Engineering)	By: Bill Ledyard Director of Facilities (Lake Central School Corporation)	By: Eric Wolf Construction Administrator / Associate (Schmidt Associates)


Signature:

Date:

2/9/24

Signature:

Date:

Signature:

02/09/2024
Date:



HEATING ... AIR CONDITIONING ... PLUMBING
8410 MINNESOTA STREET MERRILLVILLE, IN 46410

Phone 219.947.4999

FAX 219.947.1563

FAX 219.947.2864

*Design Build
Installation + Service*

August 24, 2023
Schmidt
Lake Central School
RE: Storage tanks and water heaters

We are pleased to present a proposal for the above-referenced project.

Scope of work includes:

- Plumbing license and registration
- Demo of existing storage tanks, water heaters, and RPZ
- Furnish and install new domestic copper water pipe to accommodate new water heater location
- Furnish and install new domestic water heater storage tank
- Furnish and install RPZ
- Furnish and install (2) new domestic water heaters

<u>PLUMBING WATER HEATER PROPOSAL TOTAL</u>	<u>\$ 65,000.00</u>
<u>STORAGE TANK AND RPZ REPLACEMENT TOTAL</u>	<u>\$33,800.00</u>

Clarifications:

- Existing shut off valves are to be operable and accessible in order to make new connections to the domestic water system. If valves are inoperable, additional costs will be incurred to replace with new

Thank you for this opportunity to provide you for this quotation on this project.

Respectively Submitted,

Arctic Engineering Co Inc.
Peter Ferrari
Plumbing Division Manager
219-309-6573

Submittal Transmittal

Project Name:	LCHS Freshman Ctr HVAC Improvements	Date:	January 8, 2024
		Job #	2750
Architect:	Schmidt Associates, Inc.		
	415 Massachusetts Avenue	Submittal #	0-223400-01
	Indianapolis, IN 46204-1501		
Contractor:	Arctic Engineering Company, LLC	Submitted By:	Sarah E. Polman
	8410 Minnesota Street		
	Merrillville, IN 46410		
Subcontractor:			
Specification #	233400	Resubmittal?	Yes <input checked="" type="checkbox"/> No <input type="checkbox"/>
Specification Name & Description:	Water Heater		
Supplier:		Manufacturer:	Lochinvar
Submittal Type:	PD	Submittal Description:	Water Heater & Accessories

Notes: Revised per engineer's review comments.

Architect Stamp:

HVAC SUBMITTAL

***Project Name: LCHS Freshman Center HVAC
Improvements***

***Arctic Engineering Company, LLC.
Job # 2750***

CONTENTS

1. Specification Section: RESUBMITTAL
23 34 00 Water Heater & Accessories
a. Product Data

			
FROM:	<input checked="" type="checkbox"/>	VENDOR	<input type="checkbox"/> ARCH.
	<input type="checkbox"/>	ENG.	<input type="checkbox"/> G.C.
TO:	<input type="checkbox"/>	VENDOR	<input type="checkbox"/> ARCH.
	<input type="checkbox"/>	ENG.	<input checked="" type="checkbox"/> G.C.
DATE:	<u>January 9, 2024</u>		



Lochinvar®
HIGH EFFICIENCY BOILERS & WATER HEATERS

ARMOR™
CONDENSING WATER HEATER

Submission Sheet

AWN-CA-01

ARMOR™ CONDENSING WATER HEATER / 150,000 TO 285,000 BTU/HR

Job Name: _____ Model No. AWN201PM
Location: _____ Type Gas _____
Engineer: _____ Recovery Rate in GPH _____ @ _____ °F Rise
Agent/Wholesaler: _____ Equipment Tag(s): _____
Contractor: _____

NOTES:

Standard Features

- › AHRI Certified 96% Thermal Efficiency
- › Modulating Burner with 5:1 Turndown
 - › Direct-Spark Ignition
 - › Low NOx Operation
 - › Sealed Combustion
 - › Low Gas Pressure Operation
- › Vertical & Horizontal Direct-Vent
 - › PVC, CPVC, Polypropylene or SS Venting up to 100 Feet
 - › PVC/CPVC Sidewall Vent Termination
- › Stainless Steel Heat Exchanger
 - › All Welded Construction, Gasketless Design
 - › 160 psi Working Pressure
 - › ASME Construction (AW 286-801)
- › Natural to L.P. Conversion Kit
- › Stainless Steel Circulating Pump
- › On/Off Switch
- › Flow Switch
- › ASME Temperature & Pressure Relief Valve (286)
- › Adjustable Leveling Legs
- › Tank Sensor
- › Adjustable High Limit w/ Manual Reset
- › Automatic Reset High Limit
- › Condensate Trap
- › Zero Clearances to Combustible Material
- › California Code Compliant
- › 5 Year Limited Warranty (See Warranty for Details)
- › 1 Year Parts Warranty (See Warranty for Details)

Smart System Features

- › SMART SYSTEM Digital Operating Control
 - › Multi Color Graphic LCD Display
- › Built In Cascading Sequencer for up to 8 Water Heaters
 - › Lead Lag
 - › Efficiency Optimization
 - › Front-End Loading Capability with CopperFin II
- › Building Management System Integration
 - › Modbus Communication (Optional)
 - › 0-10 VDC Input to Control Modulation or Set point
 - › 0-10 VDC Modulation Rate Output
 - › 0-10 VDC Input to Enable/Disable call for heat
- › Access to BMS Settings Through Graphic LCD Display
- › Low Water Flow Safety Control & Indication
- › Inlet & Outlet Temperature Sensors & Readout
- › Flue Temperature Sensor
- › Water Heater Pump Control
- › Pump Delay with Freeze Protection
- › Pump Exercise
- › Night Setback
- › Building Recirculation loop Pump Control*
 - › Night Setback of Building Recirculation Loop*
- › Time Clock
- › Maintenance Reminder
 - › Ability to enter service contact info into product
- › High Voltage Terminal Strip
 - › 120 VAC / 60 Hertz / 1 Phase Power Supply
 - › Pump Control Contacts
 - › Water Heater Pump Control Contacts
 - › Building Recirculation Pump Control Contacts
- › Low Voltage Terminal Strip
 - › 24 VAC Auxiliary Device Relay
 - › Auxiliary Proving Switch Contacts
 - › Flow Switch Contacts
 - › Alarm on Any Failure Contacts
 - › Runtime Contacts
 - › Tank Sensor Contacts
 - › Cascade Contacts
 - › 0-10 VDC BMS External Control Contact
 - › 0-10 VDC Boiler Rate Output Contacts



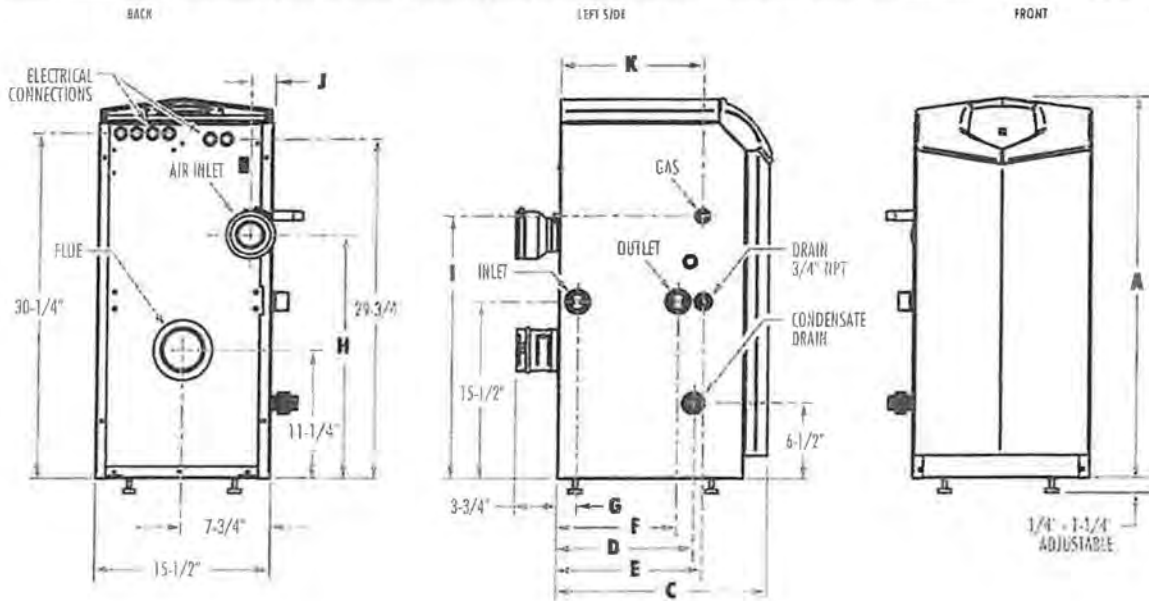
Optional Equipment

- ☐ Audible Alarm
- ☐ BACnet MSTP Communications
- ☐ BMS Gateway for LonWorks or BACnet IP
- ☐ Concentric Vent Kit (3" & 4" PVC/CPVC only)
- ☐ Condensate Neutralization Kit
- ☐ CON-X-US® Remote Connectivity
- ☐ ModBus Communications
- ☐ Room Air Vent Kits
- ☐ SMART SYSTEM PC Software
- ☐ Stack Frame

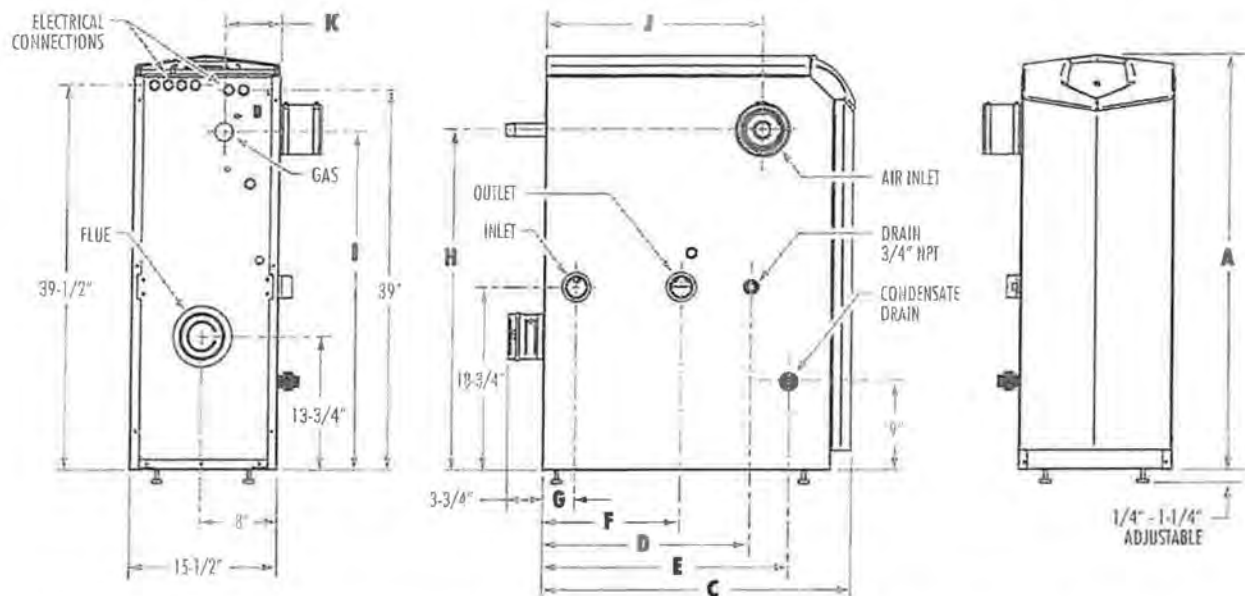
*Exclusive to Lochinvar

Armor™ Condensing Water Heater DIMENSIONS & SPECIFICATIONS

Models: AW 151-200



Models: AW 206



Model Number	Btu/hr Input	GPH @ 100° Rise	A	C	D	E	F	G	H	I	J	K	Gas Conn.	Water Conn.	Air Inlet	Vent Size	Ship Wt. (lbs.)
○ AWN151PM*	150,000	175	33-1/4"	18"	12-1/4"	11-1/2"	10"	1-1/2"	21-1/4"	23"	1-3/4"	12"	1/2"	1-1/4"	3"	3"	165
○ AWN200PM*	199,000	232	33-1/4"	22-1/4"	16-1/2"	15-3/4"	14-1/4"	5-1/4"	21-1/4"	23"	1-3/4"	16-1/4"	1/2"	1-1/4"	3"	3"	181
✓ AWN201PM†	201,000	234	33-1/4"	22-1/4"	16-1/2"	15-3/4"	14-1/4"	5-1/4"	21-1/4"	23"	1-3/4"	16-1/4"	1/2"	1-1/4"	3"	3"	181
○ AWN286PM†	285,000	332	42-1/2"	19-3/4"	12-3/4"	13-1/2"	6"	2"	34"	31"	11-3/4"	4-1/4"	3/4"	2"	4"	4"	236

All information subject to change. Change "W" to "L" for LP gas models.

*Canada only

† AHRI Certified Models



Lochinvar, LLC
300 Maddox Simpson Parkway
Lebanon, Tennessee 37090
Ph: 615.889.8500 / F: 615.547.1000
Lochinvar.com





Lochinvar®

LOCK-TEMP® ROUND JACKETED TANK

Submittal Sheet

TRJ-Sub-10

LOCK-TEMP® ROUND JACKETED STORAGE TANK

Job Name: _____
Location: _____
Engineer: _____
Agent/Wholesaler: _____
Contractor: _____

Model Number: RJA200 Gallon Capacity: 200
Tank Construction: Vertical ☐ Horizontal ☐ Working Pressure: _____
Tank Lining: Glass ☐ Cement ☐ Tank Height: _____ Tank Dia.: _____
Equipment Tag(s): _____

NOTES:

Standard Features

- Five-Year Limited Warranty (See warranty for details)
- Lock-Temp Baffle
- Magnesium Anode
- ASME Certified, "HLW" Stamped (Except RJS models)
- 125 Working Pressure (Except RJ models)

Optional Tank Linings

- ☒ Glass Lined
☐ Cement Lined (*Manway comes standard*)

Optional Equipment

- ☐ 150 psi Working Pressure
☐ Temperature and Pressure Gauge
☐ Handhole (4"x 6")
☐ Lifting Lugs
☐ Manway (Optional on 34" and 40" diameter only)
☐ 125 psi Temperature and Pressure Relief Valve
☐ 150 psi Temperature and Pressure Relief Valve



Lock-Temp® Round Jacketed Storage Tanks Dimensions & Specifications

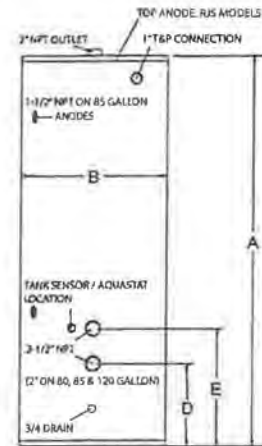
Vertical Round Jacketed Glass Lined Tanks

Model Number	Gal. Cap.	A	B	D	E	Shipping Weight	
						125 psi	150 psi
○ RJS080M	80	63"	25-1/4"	9-1/4"	14-1/4"	-	240
○ RJS085M	85	49-1/2"	28"	9-1/2"	14-1/2"	-	255
○ RJS120M	119	62"	29-1/2"	9-1/2"	14-1/2"	-	352
○ RJA120	119	62-1/2"	28"	9-1/2"	14-1/2"	-	365
○ RJA175	175	66-1/4"	32"	11-1/4"	17-1/4"	-	578
✓ RJA200	200	77-1/4"	32"	11-1/4"	17-1/4"	-	634

Models in this table are Glass Lined only

A in model number indicates ASME Construction

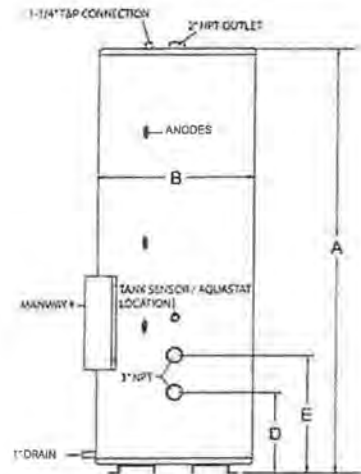
RJS120M is 160 psi working pressure



Vertical Round Jacketed ASME Tanks

Model Number	Gal. Cap.	A	B	D	E	Shipping Weight	
						125 psi	150 psi
○ R*A0257	257	91"	34"	18"	26"	904	904
○ R*A0318	318	80"	40"	19-1/2"	27-1/2"	987	987
○ R*A0432	432	80"	46"	21"	29"	1,188	1,188
○ R*A0504	504	92"	46"	21"	29"	1,329	1,329
○ R*A0650	650	92"	52"	23-1/2"	31-1/2"	1,817	1,817
○ R*A0752	752	104"	52"	23-1/2"	31-1/2"	2,030	2,030
○ R*A0940	940	128"	52"	23-1/2"	31-1/2"	2,710	2,710

* Indicates tank lining: Use G=Glass Lined; C=Cement Lined

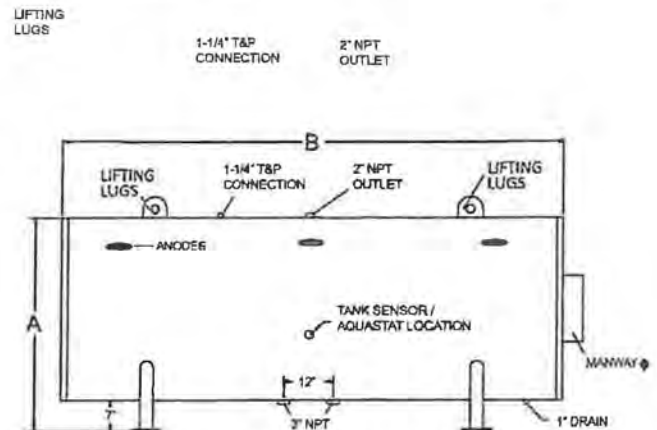


◆ Manway is optional on 257 and 318 gal. only.
Manway is standard on 432 gal. and larger.

Horizontal Round Jacketed ASME Tanks

Model Number	Gal. Cap.	A	B	Dia.	Shipping Weight	
					125 psi	150 psi
○ R*A0250H	250	41"	87"	34"	1,157	1,157
○ R*A0300H	300	47"	76"	40"	1,355	1,355
○ R*A0400H	400	53"	76"	46"	1,587	1,701
○ R*A0500H	500	53"	88"	46"	1,711	1,853
○ R*A0600H	600	59"	88"	52"	2,053	2,053
○ R*A0700H	700	59"	100"	52"	2,399	2,399
○ R*A1000H	1000	59"	124"	52"	3,114	3,114

* Indicates tank lining: Use G=Glass Lined; C=Cement Lined



◆ Manway is optional on 250 and 300 gal. only.
Manway is standard on 400 gal. and larger.



Lochinvar, LLC
300 Maddox Simpson Parkway
Lebanon, Tennessee 37090
P: 615-889-8900 / F: 615-547-1000
Lochinvar.com

Thermal Expansion Tanks

Lochinvar's LTCPA series are ASME fixed diaphragm, pre-charged thermal expansion tanks. Designed for hydronic heating systems or potable hot water systems, the tank uses compressed air to maintain system pressures by accepting and expelling the changing volume of water as it heats and cools. These tanks employ a fixed diaphragm, flexing butyl barrier that separates the stored water from the pressure control air cushion. The thermal expansion tanks are engineered to meet ASME standards.

Outstanding Features:

Construction - The shell is painted carbon steel and the fixed diaphragm is heavy-duty Butyl which is FDA approved for potable hot water systems. The system connections are stainless steel. Lifting rings are standard on LTCPA-20 through LTCPA-210.

Gallon Capacities - The LTCPA series is available in tank gallon capacities from 3.5 to 90 gallons.

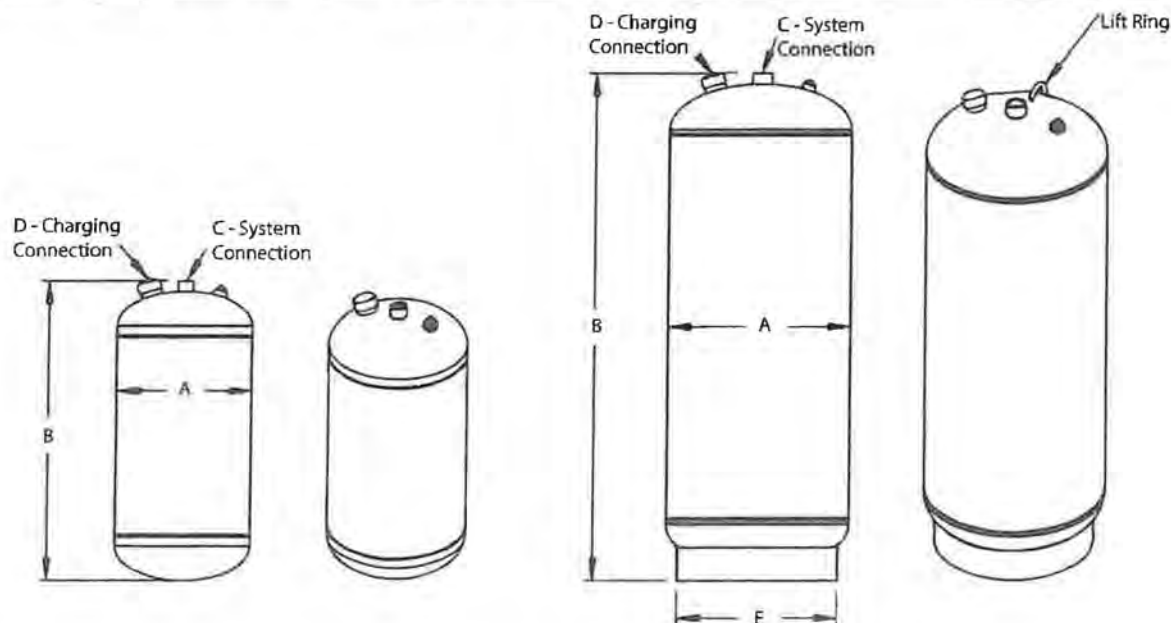
Temperature and Pressure Rating - The LTCPA series has a maximum temperature rating of 240°F and a maximum working pressure rating of 150 PSI. The tanks are factory pre-charged to 40 PSI which is field adjustable.

Code Certification - The tanks are design certified to ASME Section VIII, the Boiler and Pressure Vessel Code and are stamped for its 150 PSI maximum working pressure. Non-ASME models are available. Consult factory for details.



Horizontal construction is available. Consult factory for specific options.

Thermal Expansion Tank Dimensions and Specifications



Model Number	Tank Volume (Gal)	Acceptance Volume (Gal)	A	B	C	D	E	Ship Wt.
LTCPA5	3.5	2.3	10"	14"	3/4"	0.302" -32NC	-	22
LTCPA12	5	3.3	12"	14"	3/4"	0.302" -32NC	-	28
LTCPA20	8	5.3	12"	20"	3/4"	0.302" -32NC	10"	34
LTCPA30	15	10.0	16"	24"	1"	0.302" -32NC	14"	64
LTCPA42	22	14.5	16"	31"	1"	0.302" -32NC	14"	88
LTCPA60	26	17.5	16"	34"	1"	0.302" -32NC	14"	93
LTCPA80	35	23.5	16"	45"	1"	0.302" -32NC	14"	109
LTCPA100	45	30.0	20"	39"	1"	0.302" -32NC	18"	148
LTCPA125	60	40.0	20"	50"	1"	0.302" -32NC	18"	175
LTCPA160	70	47.0	24"	47"	1-1/2"	0.302" -32NC	22"	259
LTCPA180	80	53.0	24"	50"	1-1/2"	0.302" -32NC	22"	268
LTCPA210	90	60.0	24"	53"	1-1/2"	0.302" -32NC	22"	283

Options

- California code-sight glass is available upon request
- Available with mounting clips



Lochinvar, LLC
300 Maddox Simpson Parkway
Lebanon, Tennessee 37090
P: 615.889.8900 / F: 615.547.1000
Lochinvar.com



Lochinvar®
HIGH EFFICIENCY BOILERS & WATER HEATERS

CONDENSATE NEUTRALIZATION KIT

Submittal Sheet

CON-Sub-04

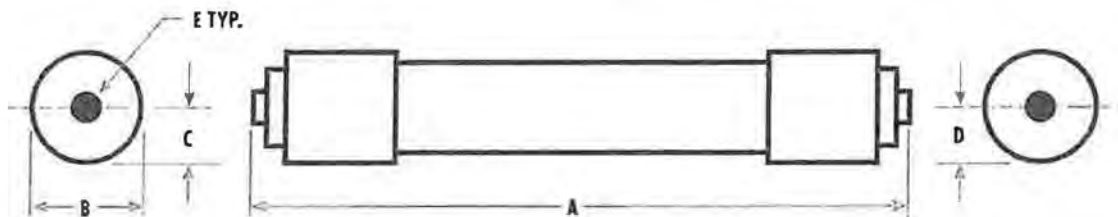
CONDENSATE NEUTRALIZATION KITS FOR BOILERS UP TO 6.0 MBTU

Job Name: _____ Model No. 100289339
Location: _____ **NOTES:**
Engineer: _____
Agent/Whls: _____
Contractor: _____

STANDARD FEATURES

- Clear tube for visual inspection
- Integrated unions with o-rings
- Calcite and magnesium oxide media
- Recharge kits sold separately
- Includes PVC adapters
- Includes mounting brackets for 2" tube style

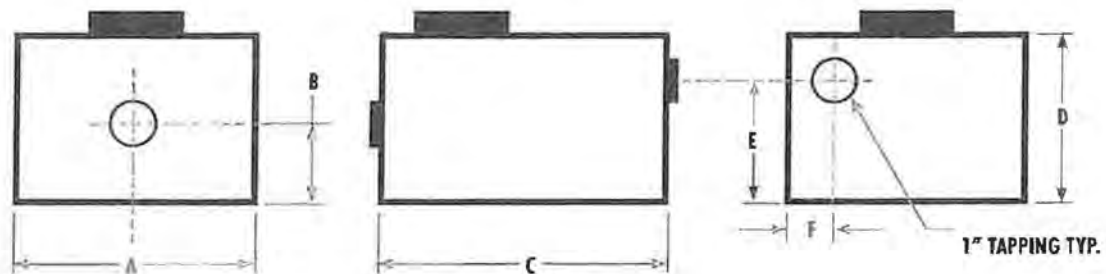
MODEL
CN2-300
CN4-850
CN4-2000



SAP NO.	BTU/HR RANGE	MODEL NO.	A	B	C	D	E	F	RECHARGE KIT
✓ 100289339	0 - 300,000	CN2-300	18-3/4"	2-3/4"	1-3/8"	1-3/8"	1/2" FNPT	—	100295915
Ø 100289340	400,000 - 850,000	CN4-850	15-3/4"	5"	2-1/2"	2-1/2"	3/4" FNPT	—	100295916
Ø 100289581	1,000,000 - 2,000,000	CN4-2000	26-3/4"	5"	2-1/2"	2-1/2"	3/4" FNPT	—	100295917
Ø 100289582	2,500,000 - 6,000,000	CN6T	12"	1-3/4"	15"	8	5-3/4"	2-1/2"	100295918

All dimensions +/- 1/8"

MODEL
CN6T



Lochinvar®
HIGH EFFICIENCY BOILERS & WATER HEATERS

Lochinvar, LLC
300 Maddox Simpson Parkway
Lebanon, Tennessee 37090
P: 615.889.8900 / F: 615.547.1000
f i n Lochinvar.com

Lake Central School Corporation

8260 Wicker Avenue
Tel: (219) 365-8507

St. John, IN 46373
Fax: (219) 365-6406

website: lcsc.us



Lawrence Veracco, Ph. D.
Superintendent

Rob James
Director of Business Services

To: Board of School Trustees

From: Mr. Rob James, Director of Business Services

Date: February 15, 2024

RE: Board Meeting February 19, 2024

Donations (Action Required)

Received

The Kahler Band and Choir Boosters would each like to donate \$1,470 toward the purchase of a new copy machine to be dedicated to the band and choir shared space.

Given

The Grimmer National Junior Honor Society held a fundraiser for the American Heart Association (AHA). The school would like to donate the \$335.57 raised to the AHA.

The Clark Middle School Special Education Snack Cart program would like to donate \$750 to Special Olympics, Indiana.

Homan Elementary School recently held a fundraiser for Riley Children's Hospital. The school would like to donate the \$2,115.71 raised to Riley's.

Approval of Early Literacy Achievement Grant Distribution Resolution (Action Required)

In December, all public school districts in Indiana received the Early Literacy Achievement Grant from the State. The grant funds are for stipends to teachers, instructional coaches, and other school staff responsible for implementation and delivery of literacy and reading instruction of students through grade three during the 2022-2023 school year and have maintained employment within the school corporation as of the date of distribution. The enclosed resolution approves the stipend amounts to the eligible staff members.

BOARD RESOLUTION

WHEREAS, on December 15, 2023, the Indiana Department of Education (the "IDOE") issued guidance related to the Early Literacy Achievement Grant established through House Enrolled Act (HEA) 1001-2023 (the "Literacy Grant").

WHEREAS, Literacy Grant funds have been issued to public school corporations for distribution to teachers, instructional coaches, and other school staff responsible for implementation and delivery of literacy and reading instruction of students through grade three during the 2022-2023 school year and have maintained employment within the school corporation as of the date of distribution.

WHEREAS, in supplemental guidance issued by the IDOE on January 10, 2024, the IDOE has required that eligible staff receiving payments through the Literacy Grant be paid supplemental payment stipends pursuant to IC 20-28-9-1.5(a).

WHEREAS, the Board of School Trustees desires to pay supplemental payment stipends to certain staff members as authorized by this Resolution and as required by the IDOE.

NOW, THEREFORE, the Board adopts this Resolution which approves the following:

1. The Superintendent of Schools is specifically authorized to pay supplemental payment stipends through the Literacy Grant to the following staff members in the following amounts:

PreK- Grade 3 Teachers, ELL Teachers, Reading Specialists, Reading Interventionists, Literacy Coaches, Speech Language Pathologists, Speech Language Pathology Assistants, Library Clerks	\$454.46
PreK – Grade 3 Paraprofessionals / Tutors	\$225.00
2. The supplemental payment stipends authorized herein are one-time supplemental payments and shall not be added to the base salary of any staff member receiving such stipend.
3. The Superintendent of Schools is instructed to distribute all Literacy Grant stipends in accordance with the requirements established by the IDOE.

THIS RESOLUTION APPROVED this 19th day of February 2024.

Lake Central School Corporation

By its Board President

Attest:

By its Board Secretary